

ORTHOEVIDENCE⁺

Better Evidence . Better Analytics . Better Decisions

Reading research takes time. Deciding what to read shouldn't.

OrthoEvidence (OE) is a global digital content provider of the best evidence in orthopaedics. The goal of OE is to reduce the time it takes for high-quality research to be published and implemented into practice.

There are more than 11,000 pieces of musculoskeletal literature produced annually. OE identifies, analyzes, summarizes, and grades the top 5% of content and makes it available in an easy-to-read ACE (Advanced Clinical Evidence) format for our users.

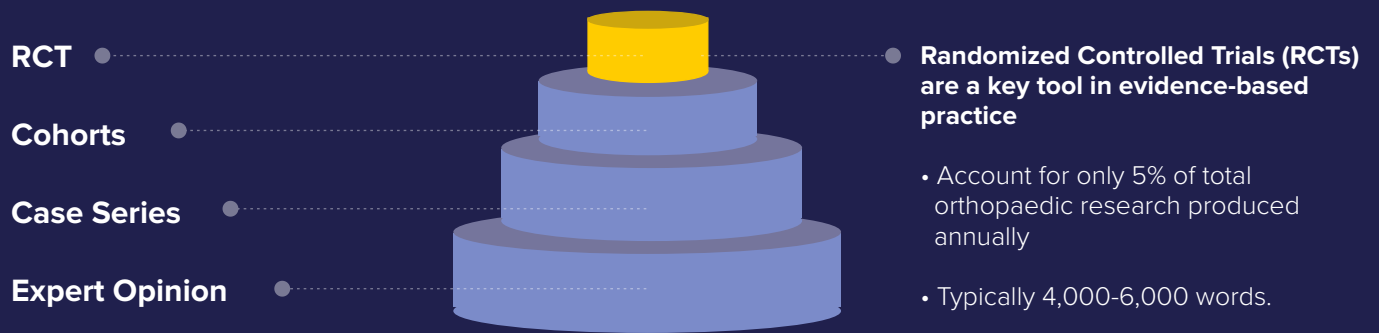
Over 70,000 Orthopaedic Surgeons, Sports Medicine Specialist and Physiotherapists are using OE across the globe. Join your colleagues today!



In 2007, the British Medical Journal named Evidence-based Medicine as one of the top 15 medical discoveries of the past 166 years.

Highest Quality Evidence:

Our content is based on the highest level of evidence which are likely to impact practice. Therefore, if the study is on OE, it is worth reading. Our filtering saves you time.



Ace Reports:

Advanced Clinical Evidence (ACE) Reports are summaries of RCTs, designed with the busy practitioner in mind.

Succinct, 500-word summaries with 100-word synopses.

Drawn from more than 600 journals, with a rigorous and transparent approach to quality control.

Trusted reports ensuring all information is presented without bias.

With OrthoEvidence, users read more, impactful research in less time.

The Anatomy of an ACE Report

Cover of publishing journal.

Users can link to the publishers website to view the publication abstract and learn more about the journal.

Type of study and Levels of Evidence.

OrthoEvidence exclusive interview provides insights and information in regards to the publication that may not have been known

Information about the **funding for a trial** and the potential **conflicts of interest** of the authors.

Study Characteristics

A summary of the pertinent study details including the sample population, intervention, control, outcome measures of interest, study design, and follow-up.

Summary of important findings.

Answer questions and earn eligible **CME (Continuing medical education)** credits.

Date of publication. The date when the original research article was published by the journal.

Author verification. Reviewed by the original author of the publication to ensure an accurate summary of their work.

Authors of the publication. Click an author's name to see other ACE Reports of other works that author has published.

Study synopsis. A short paragraph providing a summary of the research and it's findings.

Rationale and Research Question. An introduction to the condition being studied, treatments being investigated, the current evidence on the topic, and why this study was needed. The principle research question in PICOT format provides a concise formulation of the objectives of the study.

A summary of pertinent details
A summary of the pertinent study details including the sample population, intervention, control, outcome measures of interest, study design, and follow-up.

Risk of Bias
The Risk of Bias assessment provides an evaluation of the methodological quality of the research conducted.

Start a conversation. **Leave a comment** on a report and engage with other users.



Why OrthoEvidence?



Continuing Medical Education Credits

Continuing Medical Education (CME) / Continuing Professional Development (CPD) is an ongoing requirement for practicing surgeons, physicians and allied healthcare practitioners. Reading ACE Reports is an efficient way to earn CME/CPD credits for a number of professions in North America and abroad through reciprocity agreements.



FASTTRACK

FastTrack aggregates key ACE Reports read by highly active members within a given association (5-7% of members) and repackages these reports in a monthly email. This keeps the followers (50-70% of association members) within 1 standard deviation of the highly active association members.

70K+

More than 70,000 Healthcare Practitioners rely upon OrthoEvidence.

6000+

Our database of 6000+ high-quality ACE Reports spans 13 specialties.

160+

Our global reach helps OE stay current in over 160 countries.

OUR PRODUCTS

A Suite of Products Delivering Value to our Orthopaedic Community



OE Originals

OE Originals are original research briefs that leverage the expertise of our in-house data scientists to provide new data analyses, results, and insights to inform critical questions. These research briefs summarize evidence from original datasets obtained through published literature (e.g. meta-analysis of randomized trials) and original research (e.g. physician and patient surveys) conducted by our research experts.



OE Insights

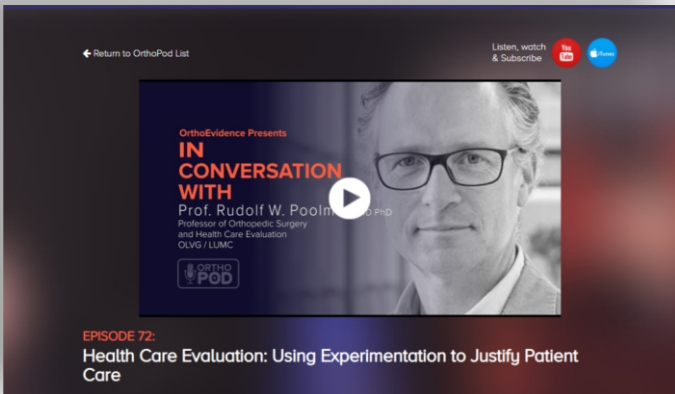
OE Insights are original thought-provoking articles written by OE's Editor-in-Chief, and in-house data scientists. These papers provide readers with critical discussion on novel perspectives and timely topics that lack quantitative data. These papers synthesize published and grey literature, anecdotal accounts, expert opinions, as well as original research (e.g. OE community surveys) conducted by our research experts.



ACE Reports

The Advanced Clinical Evidence (ACE) report summarizes pertinent information extracted from the latest high-quality orthopaedic research in a concise and digestible format.

Our team of research experts and data scientists perform objective critical assessments of the study, which include Risk of Bias, Quality of Reporting, and Strength of Findings.



OrthoPod

OrthoPods are uniquely honest, fun and insightful interviews with leading healthcare leaders, innovators and pioneers in orthopaedics. Topic covered include current interests, work/life balance, leadership and clinical areas.



OE Perspectives

OE Perspectives are short discussion summaries of OE's video content and dive deep into the main themes, and highlight the main takeaway messages of each discussion. For these perspectives, we conduct qualitative analysis of the interview data. The analytic steps include reviewing the interview transcripts in detail, deriving initial codes from exact words in the data that appear to represent key concepts of interest, and sorting related codes into themes that reflect surgeons' perspectives on re-opening and infection surge.



CONTACT US

ORTHOEVIDENCE⁺

3228 South Service Road, Suite 206
Burlington, Ontario L7N 3H8 Canada
1-289-337-5717

 info@myorthoevidence.com

 www.myorthoevidence.com