

# Good order is the foundation of all things:

## A strong project management structure underpins successful research at Keele Clinical Trials Unit (CTU)

Sarah A Lawton, Kris Clarkson, Ruth Beardmore, Irena Zweirska, Martyn Lewis, and Nadine E Foster on behalf of Keele CTU

Keele CTU, Keele University, Keele, Staffordshire, ST5 5BG

### Context

Keele Clinical Trials Unit (CTU) is a UKCRC registered CTU, specialising in the development and delivery of epidemiological studies, feasibility and main multicentre clinical trials, and an increasing portfolio of Clinical Trials of Investigational Medicinal Products (CTIMPs). An effective project management structure is essential for the delivery of high quality research.

### Background

# 97%

of Keele University's research was deemed to be world-leading, or of international importance in REF 2014 and Keele CTU, providing support for the design, delivery, analysis, reporting and dissemination of applied clinical research is contributing to this success!

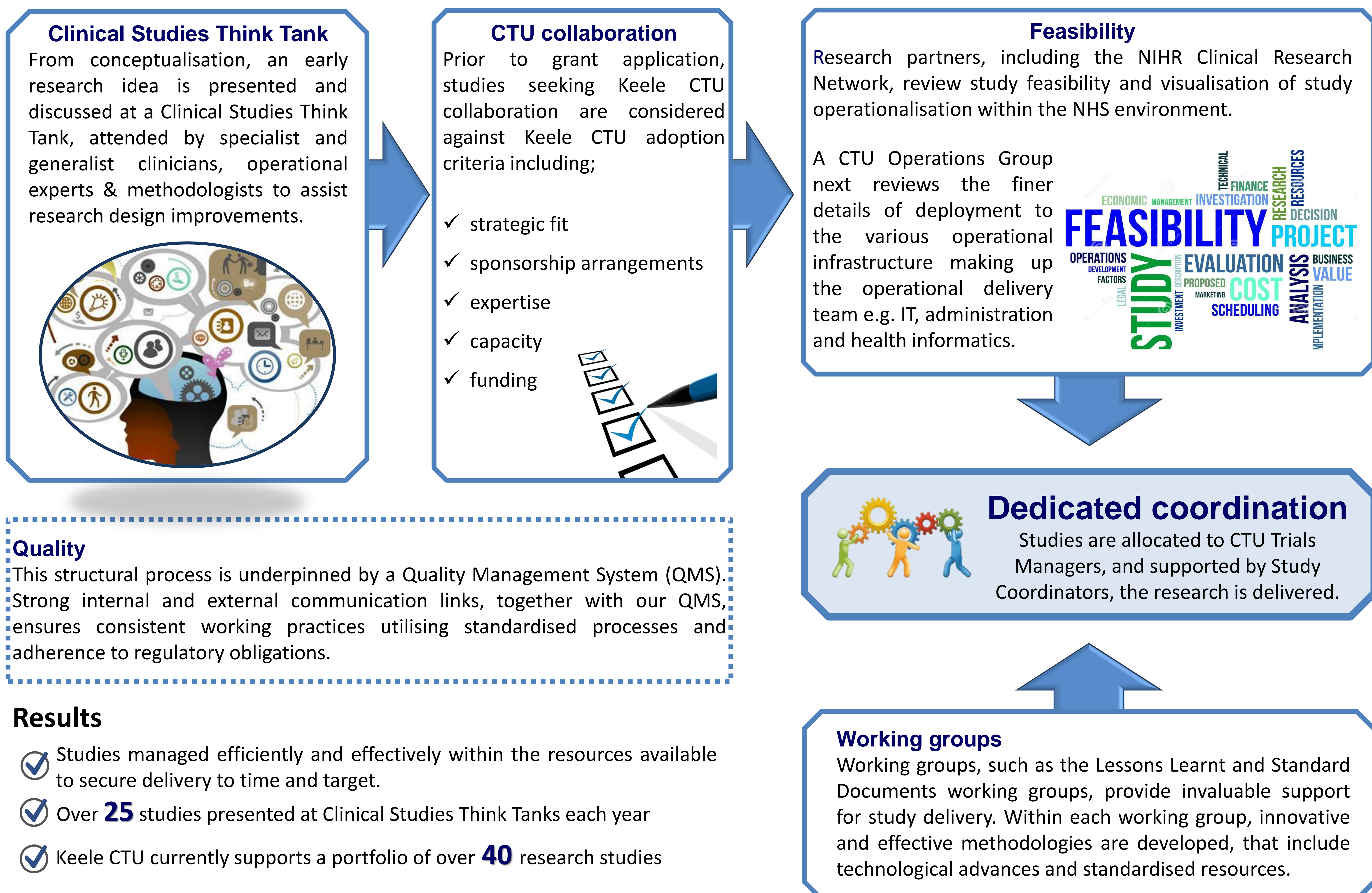
Specialist expertise has been developed and deployed in the areas of;

- ✓ trial design
- ✓ intervention development
- ✓ biostatistic approaches
- ✓ regulatory coordination

**This expertise requires a strong project management structure to conduct and deliver clinical research to the highest quality standards.**

### Approach

A structural flow beginning at study conception through to successful dissemination of results, for each CTU supported research study, is employed.



### Results

- ✓ Studies managed efficiently and effectively within the resources available to secure delivery to time and target.
- ✓ Over **25** studies presented at Clinical Studies Think Tanks each year
- ✓ Keele CTU currently supports a portfolio of over **40** research studies

### Conclusions

- Keele CTU is increasing its portfolio of research studies whilst making strides with innovative and effective operational improvements. This all needs to be carried out within a robust and supportive QMS to ensure successful study delivery.
- Good order is key to the foundations of any study. Our strong project management structure has allowed us to work collaboratively, integrating all specialties and expertise required, transparently, in order to achieve the successful delivery of research.

**Contact details:** Sarah Lawton, Senior Trials Manager  
s.a.lawton@keele.ac.uk

**Acknowledgements:**  
The views expressed in this publication are those of the authors and not necessarily those of the NHS, the NIHR or the Department of Health.