



## Edition 38 – June 2019

### Contents

Head of School .....	1
School News .....	2
Anatomy Update .....	2
Sunderland Medical School Update .....	2
Global Health Research Highlights .....	3
International partnership with Botucatu Medical School, Brazil .....	3
Postgraduate Update .....	4
Masters in Physician Associate Studies Course Starts .....	4
Leadership is a team sport! .....	4
News from Shrewsbury and Telford Hospitals .....	5
Clinical Dinner in Shropshire Education and Centre .....	5
We hate to see you go .....	5
Staff Conferences .....	6
"Anatomies in the Virtual Realm" .....	6
UK Nerve Engineering Network Meeting .....	6
SAPC North .....	7
Institute of Anatomical Sciences Meeting .....	7
RCGP Conference .....	8
New "brain-on-a-chip" technology .....	8
Recognition of teaching – GP Partners .....	9
Staff Personal News .....	9
Promotion to Senior Teaching Fellow .....	9
Promotion to Senior Lecturer .....	9
Congratulations to: .....	9
Blackboard User Group .....	10
Erasmus+ .....	10
Period Power Collection .....	11
Period Power Thanks .....	11
International Anthology of Poetry & Medicine .....	11
Publications for Simulated Patients .....	12
Student News .....	12
National Medical Ethics Competition .....	12
Discover GP Conference .....	12
Charing Cross Symposium .....	13
British Society of Parasitology Meeting .....	13
Brazilian Student Visit .....	14
Alice Christmas Charity Appeal .....	14
Aspire Research Showcase and Bursary Scheme 2019 .....	15
Keele Medical Student Highly Commended In Prestigious Research Competition .....	15
Keele medical students on SOLACE fieldtrip in rural Philippines .....	16
ASME 2019 small grant award .....	16
Student Poster Presentation at Trauma Care Conference .....	17
Experience as an Overseas Medicine Student .....	17
Teddy Bear Hospital .....	18
Staff changes .....	19
FORTHCOMING EVENTS .....	20
Soapbox Science .....	20
Articles for MedNews .....	20
Social Media .....	20

## Head of School



A strong theme of this edition of MedNews is the increasing influence of the School of Medicine beyond Keele and the Potteries. It's really heartening to see Sunderland Medical School's progress, with their first medical students starting this September. As people will be

aware, Sunderland have adopted the Keele curriculum, with the support of many Keele staff. Of course, we are learning a lot from Sunderland as well as vice versa, not least their inspiring work around widening participation.

For a small, young school, our developments in Global Health are also extremely encouraging. It's fantastic to see our students and staff learning with colleagues in Brazil, the Philippines, South Africa and Malaysia. We look forward to the further development of these exciting collaborations and I am very grateful to those leading them.

Last, but by no means least, the reach of our superb Postgraduate Anatomy team gets greater and greater, with surgeons from across the globe attending courses at Keele Anatomy and Surgical Training Centre. A super tribute to the dedicated team involved.

It's been an excellent year for the School of Medicine. I really hope everyone has a well-earned break over the summer.

**Professor Andrew Hassell, Head of School**

# School News

## Anatomy Update

In what the Anatomy Department believes to be a unique development, both undergraduate and MMedSci Anatomical Sciences students have had the opportunity to observe first-hand and assist on a postgraduate surgical training course on the Aortic Arch procedure, organised by Heart Research UK. Debbie Harrington, Consultant Cardiac & Aortic Surgeon, Liverpool Heart & Chest Hospital (Course organiser) said "I also thought it was a great idea to invite the medical students in. It is only by inspiring the next generation that we will attract the best people into our speciality."

Following excellent feedback from both the students and the course organiser, this opportunity has been extended and students have been able to observe on Major Incident Surgical Trauma, Post Cancer Breast Reconstruction, Regional Head and Neck Dissection, and ENT Core Training courses. It is planned to extend this opportunity further in the future.

Mr Ajith George, Royal College Surgical Tutor and Lead for Surgical Simulation, HEE West Midlands said "The KASTC provides surgeons with a unique opportunity to innovate in surgery. We are currently exploring new trans oral surgical techniques, researching into new developments in anatomy in this area and exploring novel teaching techniques such as Augmented reality, virtual reality and 3D anatomy applications".



## Sunderland Medical School Update



Keele School of Medicine has been supporting the establishment of a Medical School at Sunderland University, which will be adopting the Keele medical curriculum.

The project is progressing really well and Sunderland Medical School is looking forward to welcoming their first cohort of students in September 2019.

All the core Sunderland School of Medicine staff are now in post and 2 further Senior Lecturer posts are due to be interviewed for in May.

They have made 125 offers for the 50 places available in September 2019. An Offer Holder Day was held on 6th March which was attended by 56 applicants (and 60 parents). Feedback from the applicants and parents was very positive. Channel 4 carried out some pilot filming at the Offer Holder day for a possible documentary.

The year 1 timetable has been developed and staff identified to teach each session. Many of the Keele documents have been adapted by Sunderland and they are very grateful to all the Keele staff for their support.

78 Year 12 students attended a medicine taster day on 23rd April which provided an opportunity for them to carry out anatomy body painting and ultrasound. They will be also holding a two day Medicine Summer School for potential applicants in July.

You could see Sunderland Medical School website <https://www.sunderland.ac.uk/study/medicine/>

## Global Health Research Highlights

The Global Health Research Programme was developed in January 2017, with the aim to develop multi-disciplinary, interdisciplinary and clinical effective research in collaboration with international partners to improve the quality of life of the most vulnerable populations in resource poor settings.

The team's research investigates the prevalence, management and experience of non-communicable disease in Low to Middle Income Countries (LMICs). Staff and students at the School of Medicine are very much engaged with this global health education and research. Recent activities include:

- Dr Lisa Dikomitis (Senior Lecturer in Sociology of Health) is the academic host of two visiting global health researchers: Dr Anthea Lesch, a community health psychologist from Stellenbosch University and Ms Aimi Syahidah Zulkipli, a lecturer in speech therapy from Universiti Sains Malaysia Penang. Both have been funded by an ILAS Fellowship. For more info: [www.keele.ac.uk/ilas/institutefellowships](http://www.keele.ac.uk/ilas/institutefellowships)

- Dr Eva Luksaite and Dr Lisa Dikomitis, the School's two anthropologists, presented their ethnographic work on sterilisation camps in rural North India (EL) and rural health in the Philippines (LD) in a Newton Researcher Links workshop held in Kuala Lumpur at Monash University Malaysia

- Professor Andrew Hassell and Dr Dikomitis, with members of the iPRIME team, delivered keynote talks in Manila at the Annual Convention of the Philippine Academy of Family Physicians. Professor Hassell's keynote presentation was entitled Experiences, perceptions and primary care physicians – the iPRIME study and Dr Dikomitis presented in a plenary panel on The potential of ethnography for family medicine research. For more info: [www.ateneo.edu/heals/iprime](http://www.ateneo.edu/heals/iprime)

- The SOLACE team has hosted a well-received conference with presentations from clinicians and anthropologists from Ateneo de Manila University (Philippines) and launched an exhibition Pictures of rural health in the Philippines which can be viewed at the Arts Keele Gallery, Chancellor's building until 4 June 2019. More info: [www.solace-research.com](http://www.solace-research.com)

- see below reports about our links with Brazil

Dr Lisa Dikomitis, Senior Lecturer in Sociology of Health

### International partnership with Botucatu Medical School, Brazil

The medical school's international bursary scheme for students to attend the Winter School on Tropical Diseases in Botucatu, Brazil ran again in 2019, offering students a unique experience to gain knowledge of diseases and conditions rarely experienced in the UK e.g. AIDS and venomous snake bites. 15 Keele students have now been funded under the scheme including three successful applications in 2019.

The medical school will also welcome five Brazilian students from Botucatu Medical School to Keele in May 2019. This exchange programme will allow the students to gain first-hand experience of the UK National Healthcare System. (See their report later in this edition). A total of 23 international students will have undertaken the exchange in 2019.

The Faculty has recently developed a new research training partnership with the Royal College of Surgeons, Ireland satellite campus in Bahrain. Four medical students from Bahrain will undertake one month research studentships across Regenerative Medicine and Primary Care in June 2019.

Divya Maitreyi Chari, Director of Internationalisation



# Postgraduate Update

## Masters in Physician Associate Studies Course Starts

Postgraduate Medicine are proud to have started the new Masters in Physician Associate Studies course in March. Dr Alison Pooler assisted by Joy Bagguley, Dr Audrey Skidmore and Alison Manning have worked extremely hard to develop the course.

It has been a collective effort from many in the medical school including admissions and interviews (many thanks to Julia Molyneux), Vanessa Hooper, and the skills teaching team at the CEC (Dr Janet Lefroy and Dr Felicity Clark).

The initial cohort of 9 students will undertake a two-year Postgraduate Diploma course consisting of a variety of classroom and clinical placements. We are privileged to have such a capable group of medical science and anatomy lecturers to help and a great anatomy suite.

The new intake group are pictured below.



Alwyn Ralphs, Director of Postgraduate Programmes

## Leadership is a team sport!

The Leadership and Management for Healthcare Professionals Module was truly an inter-professional module this May. Sixteen students came from a variety of health care professions and work backgrounds. They included a pharmacist, consultant clinical psychologist, psychiatrist, complementary therapist, two physiotherapists, three nurses, four nurse practitioners, manager in governance and information, a cardiac doctor and an orthopaedic doctor.



As well as all being busy professionals, part-time students on academic studies and juggling a very busy personal life they also found time for a variety of extra-curricular activities.

Consultant Clinical Psychologist Stephanie Hutton from Staffordshire is a writer and during the same week as the leadership module was announced winner for best novella at Saboteur Awards for Three Sisters of Stone which follows three sisters as they manage adversity in very different ways, culminating in loss, growth and self-knowledge. Twitter @tiredpsych

Anyone interested in undertaking the Postgraduate Certificate in Leadership and Management or a clinical leadership CPD course please contact Dr Wynne Thomas

Dr Wynne Thomas, Director of Clinical Leadership Academy / Senior Teaching Fellow  
[m.j.w.thomas@keele.ac.uk](mailto:m.j.w.thomas@keele.ac.uk)  
[www.keele.ac.uk/cml](http://www.keele.ac.uk/cml); Twitter @CLAKeele

# News from Shrewsbury and Telford Hospitals

## State of the Art Simulation Suite



Our simulation suite has had a huge upgrade. Two new state-of-the-art manikins that speak, blink and even bleed are helping train healthcare professionals and those of the future at SaTH. The new dedicated Simulation Centre, based at the Copthorne

Centre, was opened by the Mayor of Shrewsbury in January for Trust-wide use.

The manikins are able to simulate medical emergencies such as epileptic fits and septic shock as well as displaying more subtle signs of medical distress. It will continue to be used in undergraduate and postgraduate education and in a multi-professional way to get the reality of team working in a ward-based environment but with it being risk free and fully supportive.

Working as a team to look after and communicate with distressed patients and relatives during the assessment and treatment of patients is invaluable.

## Clinical Dinner in Shropshire Education and Centre

The clinical dinner in February was another big success and well attended by staff and students. The evening included a lecture from Dr Simon Nightingale titled "Meaning of Life in a Meaningless Universe."

Dr Perks did well to organise an entertaining evening and the catering team provided us with an excellent meal as always.

## We hate to see you go...

After twenty years with the trust, and a number of years with the Medical School, Dr Wallbridge is retiring. We're sure we won't be the only ones missing his presence in the hospital corridors and wards. We wish you the best of luck with your travels in New Zealand, Dr Wallbridge, and hope you don't work too hard, but if you find yourself looking for things to do, I'm sure we can find you something in the Medical School!

Not only are we saying goodbye to Dr Wallbridge, but we're also losing our lovely Clinical Skills Technician, Marlene Jones for a few hours a week. Marlene would like it well known that she is only SEMI-retiring, but we'll miss seeing her every day none the less. As Marl is usually the one organising surprises, how we managed to keep this one secret from her I'll never know, but it was lovely to see how many people came to wish her luck. Even though, she is only SEMI-retiring! Have we made that clear enough, Marlene?



**Kate Ironmonger, Undergraduate Administrator, Shropshire Campus**

# Staff Conferences

## “Anatomies in the Virtual Realm”

Exhibition Centre, University of York, 17-19 Dec 2018

The Anatomical Society was founded in 1887 and annually hosts meetings in both the summer and winter. In the approach to the festive period, York could not have been a more fitting location for a warm, friendly, intimate conference focusing on Anatomies in the Virtual Realm. The event began with a welcome address from Professor O'Higgins followed by an afternoon of insightful speakers. A particular highlight was Dr Sweeney's presentation 'Multi-dimensional Anatomy Teaching' where she shared her experiences using a variety of supplementary techniques and applications at Queen's University Belfast that can easily be incorporated into teaching sessions to provide resources that assist students better understand spatial relationships.

Evocative, engaging discussions continued into the second day of the conference and included perspectives from the University of Southampton's neuroanatomy near-peer teaching programme, which involved comparing Traditional Lecture Style teaching with Problem Based Learning methods. Networking and conversation flowed seamlessly even while delegates navigated towards to the centre of York where the conference dinner was held in the beautiful 14th century Hospitium.

This smaller scale winter meeting perfectly set the scene for the 2019 summer conference, which will host the International Federation of Associations of Anatomists congress in London. I am positive that this will provide an exciting opportunity to discuss the development of core syllabuses, educational and biomedical research, ethics, equality and diversity related to the anatomical sciences and associated medical disciplines.

Dr Ashley Stephen, Teaching Fellow in Anatomy

## UK Nerve Engineering Network Meeting



Professor Divya Maitreyi Chari was invited to speak about her laboratory's research at the UK Nerve Engineering Network Meeting in London, November 2018. The meeting was hosted by Dr James Phillips at the UCL Centre for Nerve Engineering and supported by the Tissue and Cell Engineering Society and UCL Institute of Healthcare Engineering. The aim was to bring together the UK research community in nervous system engineering to promote interdisciplinary collaboration between academic, clinical and industry researchers.

At the meeting, it became clear that current approaches were overwhelmingly developed for peripheral nerve regeneration. Brain and spinal cord tissue engineering was identified as a specific area with a clinical and scientific need for interdisciplinary collaboration. Subsequently Professor Chari and Dr Phillips have applied with members of Keele staff for a Royal Society Hooke Meeting Award for 2020. The proposed meeting will bring together chemists and materials scientists developing novel biomaterials, with clinicians and neuroscientists developing advanced therapeutic approaches to promote repair in central nervous system pathology.

Divya Maitreyi Chari, Professor of Neural Tissue Engineering

## SAPC North

Kendal 29 & 30 November 2018

A well-organised conference for the northern medical schools show-casing all that they do, and giving us food for thought. This year was Sunderland's opportunity to share their imminent opening as a medical school and a chance to meet Scott Wilkes, Head of School.

On Day 1 keynote speaker was Catherine Walshe from Lancaster, who explored their project around support for those approaching end of life. Following on from this in the Educational room, we heard about:

- GP tutor engagement at Liverpool,
- Widening opportunities with local community electives
- Western pedagogy to teach Middle Eastern students
- Why medical students change career choice
- Medical student attitudes towards using clinical risk scores.

Sunderland closed the day with an overview of what they hoped to achieve, and the challenges they have faced, starting up a medical school from scratch. It was great to hear how well supported they felt by Keele.

On Day 2 Martina Kelly from Calgary gave an enlightening talk on "Touch and its role in the consultation and our interaction with patients". Short presentations followed and included;

- Medical students' perception of GPs and their work
- Medically unexplained symptoms in the undergraduate curriculum
- Career choices in medical students
- How best to support patients who work in undergraduate medical education
- What makes wider participation students successful.

The session closed with a review of the Newcastle 85+ Study - a huge prospective study of frailty and

an aging population and the health challenges they face- fascinating.

**Dr Fiona Hay, Clinical Lecturer in Medical Education and GP Education Facilitator**

## Institute of Anatomical Sciences Meeting

Tom Lovelock and Steven Buddle were invited to present their collaborative anatomy education projects at the Institute of Anatomical Sciences spring conference at Birmingham University.

Tom began by presenting his work on Immersive Technology in the Anatomy Department. Demonstrating a number of techniques for the capture, processing and display of 3D anatomical specimens. His focus on low-cost, open-source solutions sparked numerous questions and curious discussion.

Tom and Steve then went on to introduce an exciting joint educational project they have been working on; an ambitious new method of recording cadaveric dissections in the form of time-lapse videos. These videos serve as a way of preserving the information that is lost during the process of dissection, and have been used in undergraduate and postgraduate teaching throughout this academic year. These videos are intended to act as a visual guide for students undertaking dissections, and can also prove extremely useful to students for whom dissection is not an option by exposing the dissection process.

These ideas were well received by other anatomists at the conference, many of whom expressed interest in future collaboration with the Keele Anatomy Department on future projects. Steve and Tom plan to continue with these ideas and conduct research into their validity as resources, using feedback from students.

**Steven Buddle, Teaching Fellow in Anatomy**



## RCGP Conference

Glasgow, 4-6 October 2018

This is a large international conference attracting delegates from across the globe.

As usual, there were lots of workshops and talks covering every aspect of primary care. Inspirational keynote speakers instilled an air of positivity and enthusiasm for general practice.

Small groups covered a wide variety of topics which included new consultation models, polar exploration and associated physiology, mindfulness, early cancer detection and much more.

Posters were varied and interesting and allowed for informative discussions with their authors as well as providing new ideas and projects to take forward. As always networking with colleagues proved invaluable and stimulating.

Dr Fiona Hay, Clinical Lecturer in Medical Education and GP Education Facilitator

## New “brain-on-a-chip” technology



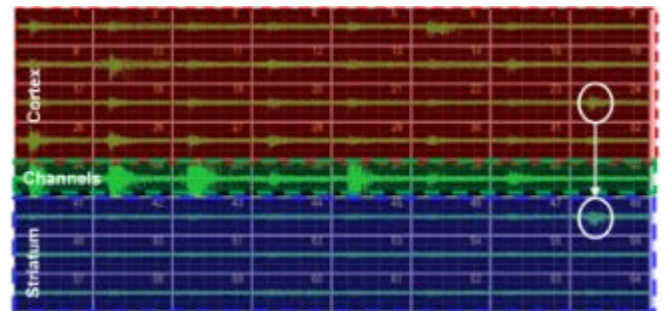
Professor Rosemary Fricker travelled to Paris in December, as an invited speaker at the Annual NECTAR (Network for European CNS Transplantation and Regeneration) conference. This meeting brings together science and clinical leaders from across Europe (and now Australia) in the fields of

CNS transplantation, stem cell therapies and neuroprotection for the major CNS disorders: stroke, Parkinson's, Alzheimer's, and Huntington's diseases.

Prof Fricker's research presentation showcased new technology developed in collaboration with Dr

Paul Roach of Loughborough University, to generate a living brain circuit mimicking the basal ganglia, the area damaged in Parkinson's and Huntington's diseases. Work by their PhD student, Dr Matthew Köse-Dunn, has generated a novel device where five different types of neurons can be separately cultured, but their axons connected to each other in the pattern normally seen in the brain. Additionally, these neurons were cultured on top of a set of microelectrodes so that the neurons' electrical activity could be monitored in real time.

Data presented at the conference showed that the groups of neurons are functionally connected, passing electrical information across the circuit. Addition of a toxin to switch off one set of neurons led to changes in electrical activity downstream in the circuit, thus producing the first functional cell culture model of Parkinson's disease. The aim of this research is to provide a platform for the use of pharmaceutical firms, small biotech companies and academic researchers, to test emerging therapies for diseases of the CNS.



Picture shows Electrical signals from a 64-electrode array, with the circles indicating neurons from different regions that are firing electrical signals at the same time – i.e. are connected

Rose Fricker, Professor of Neurobiology, Director of Medical Science



## Recognition of teaching – GP Partners

Wednesday 3rd April saw the arrival of our Medical Education Conference where guests from both the primary and secondary care sector, plus others come together to learn more about Medical Education.

Part of the conference includes a Tutor Update for our GP Tutors who support teaching our medical students during the 5 years of the course.

During this session, we awarded Recognition of Teaching plaques to representatives of practices who had taught for either 4/5 consecutive years or 9/10.

Below is a picture of the representatives receiving their award. We have a total of 11 plaques to give out this year and those not represented at the conference will get theirs delivered to them in due course.

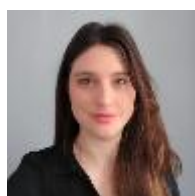


*Pictured from left to right: Dr Sri Sundaram – Adderley Green Surgery, Dr Sri Sircar – Alderwood Medical Practice, Dr Ramesh Potturi – Hanley Health Centre and Dr Toby Helliwell – Kingsbridge Medical Practice.*

Sarah Thirlwall, Placements Manager

## Staff Personal News

### Promotion to Senior Teaching Fellow



Dr Sarah Aynsley is a teaching fellow in the medical school with a special interest in immunology. She has made a significant impact in developing a highly successful redesign of several areas of teaching, through her innovative mixed methods approach. She is also heavily involved in supporting staff development across the university.

### Promotion to Senior Lecturer

Dr Sarah Hart is a biological mass spectrometrist, with experience in protein characterisation and methods development. Sarah coleads Keele Medical School's MBChB



Year 4, is a Theme Lead for "Doctor as a Scholar and Scientist" and has been involved in developing Keele's revamped medical curriculum.



Dr Heidi Fuller was awarded a Ph.D. by the University of Wales in 2005 and worked as a postdoctoral researcher within the NHS before joining Keele as an independent, early career research fellow in 2013. In 2016, she was awarded a lectureship position within the School of Medicine and ISTM.

Dr Alison Pooler joined Keele University in 2009 and developed non-medical prescribing courses for nurses and allied health professionals, which now have a national reputation and has led to her being a reviewer of such courses for the Nursing and Midwifery Council across the UK. She has also been instrumental in developing IPE across the Faculty of Health and Health Sciences and the first professional doctorate pathway in health.



### Congratulations to:

- Margaux Horn on the birth of Nora in February
- Kirsty Binnington on the birth of a son, Finlay James Ingram, also in February.

## Blackboard User Group

For approximately a year now, I have been joint chair of the UK Blackboard Medicine and Health User Group (BBMHUG). This is a role shared with my equivalent from the University of Sheffield. The purpose of this group is to spread best practice in learning technology implementation amongst the member institutions, coupled with helping to grow new networks of colleagues from across the country who share a common interest. It is sponsored by Blackboard, who provide insights into what features are on the development "roadmap" and collect the experiences of users in the Health professions to help drive the product development direction. After a successful meeting in Sheffield in November, our next meeting is planned for the 14th June at Keele Hall, and virtually via videoconference. For further details, go to <https://community.blackboard.com/groups/blackboard-medicine-and-health-user-group>

Adrian Molyneux SFHEA, Lecturer in Learning Technology, Lead for Learning Technology and Software Development

## Erasmus+

Erasmus+ is a programme that enables students and staff to visit host universities or organisations to study, teach or train. The Staff Training Mobility scheme offers professional development opportunities, to improve skills required for our jobs and to contribute to Keele's internationalisation strategies.

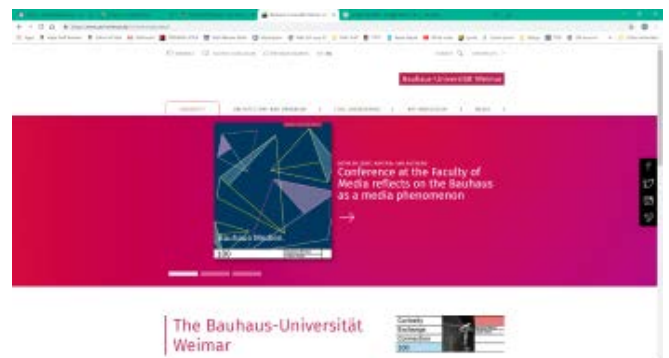
In November 2018 I visited Bauhaus-Universität Weimar in Germany for their admINT Staff Week. It mainly involved sessions and workshops around the theme of internationalisation. There was also work shadowing, networking, an introduction to the German language, and guided tours of the university and the cultural heritage of Weimar.

I was fascinated with the diversity of the participants. There were 19 participants from 16 countries, all with different roles, responsibilities, and experience.

Speaking to them helped me to realise that although internationalisation may not be a direct part of my work, it is important to consider how representation is addressed in the materials I produce.

I shadowed Gabriela Oroz—the Faculty Marketing Manager for the Faculty of Architecture and Urban Studies—and her graphic design colleagues in central communications. The faculty has no design team of its own, so the central design team manage the day-to-day work of branding, leaflets, and the website. Larger projects were outsourced, and smaller or one-off projects employed art students from the university. This often resulted in creative design that was off-brand. It made me realise how fortunate I am to be able to work directly for the School of Medicine.

The experience was valuable to me, both personally and professionally. I would highly recommend the Erasmus+ scheme to other members of staff. Their website after the new branding was implemented, using a new colour scheme and gradients (see picture)



Vicki Dean, Graphic Designer

## Period Power Collection



As part of International Women's Day celebrations in the school (8th March) there was a collection point set up for the donation of sanitary products.

The collection was to support the charity Period Power (<http://periodpower.org/>) which was established to help to eradicate period poverty in the local area. The charity donations received are distributed by volunteers of Period Power to schools (primary and secondary), public buildings and food banks in the Stoke on Trent and North Staffordshire areas stretching into Derbyshire and Cheshire. Many thanks to everyone that made a contribution, the team at Period Power were extremely grateful for the large donation made by the school. The school hopes to continue to support the great work undertaken by the team at Period Power and will be organising future collections to support the important work the charity does in the local area.

Picture left to right: Kirsty Hartley, Sarah Lawton, Jo Caviglia & Alyson Citrine from the Assessments Office at Keele.

## Period Power Thanks

Just wanted to say a big thank you for your support in our pads and tampon collection. Overall we collected 3576 sanitary items that we'll be dropping off at Sanctus and Period Power this week.



Sam Cassidy, Intercalating Medicine Student

## International Anthology of Poetry & Medicine

Dr Roger Bloor, Honorary Clinical Lecturer in the School, formerly a member of staff at North Staffs Combined Healthcare NHS Trust, is to feature in the 2019 Hippocrates Prize Anthology after a poem reflecting on his medical training was selected from around 1000 entries from around the world.

In *All Those Years At Medical School* was commended in the Hippocrates International Prize for Poetry and Medicine award's Health Professionals category. Roger says: "This poem was written as a reflection on the important lessons we learn during a medical career that perhaps change us both personally and professionally but are not part of the prescribed formal curriculum of medical schools. It struck me that over a fifty-year period in the medical profession the things that were most prominent and vivid in my memory would not be found in any medical textbook or lecture."

Roger is currently a student on the MA in Poetry Writing from Newcastle University studying at the Poetry School in London. He has been published in *The Hippocrates Prize Anthology 2017* and elsewhere, and his collection of Poems 'A Less Clear Dream' was shortlisted for the Arnold Bennet Book Prize 2018.

The Hippocrates International Prize for Poetry and Medicine Awards, supported by UK based medical charity the Fellowship of Postgraduate Medicine and the Cardiovascular Research Trust, will be announced on 17th May at the 2019 Hippocrates Awards Ceremony as part of the 10th annual international Hippocrates conference on poetry and medicine, which is being jointly organised by the Hippocrates Initiative for Poetry and Medicine and the Newcastle Centre for the Literary Arts.



## Publications for Simulated Patients

Two of our Keele Simulated Patients, Professor Bernard and Sheila Moss, at the invitation of Dr Roger Neighbour, have published an article about the contribution that Simulated Patients can make in helping trainee GPs prepare for their Clinical Skills Assessment (CSA). The article is called *It Takes Two to Tango: Simulated patients and the Clinical Skills Assessment*, and appears in *InnovAiT* 12(1) pp 18-22.

## Student News

### National Medical Ethics Competition

Institute of medical Ethics National Student Debate Competition was established to engage students in medical ethics and foster a community of interest. Following a successful video audition, the team from Keele were one of eight teams to qualify to take part in the live debate on 9th March 2019 in Manchester. Topics of the day included, involvement of prisoners in medical research, should all trusts have clinical ethics committees, legalisation of physician assisted suicide and should the best interests' test be scrapped in favour of the 'serious harm' test. The final round saw Keele face Queens University Belfast, The two year reigning champions. The final included 10 minutes of debate followed by 20 minutes of questions from the floor. The Winners of the day were decided by public vote which saw Keele take the winning title.



Left to right; Harpal Patel, Lauren Frame, Frances Gibson, Stephanie Griffiths, Saumiya Kesavan and Madalina Ioana Pasca

Stephanie Griffiths, Year 2 Student

## Discover GP Conference

Keele GP Society recently held the Central RCGP 'Discover GP' Conference at Keele Medical School in collaboration with regional GP societies, to provide medical students and junior doctors the chance to find out about the career possibilities of a GP. The event was organised by the society (President; Rebecca Woodbridge, Vice president; Meg Robertson) in conjunction with the RCGP student team.

The day kicked off with a lovely welcome from Brigadier Robin Simpson QHS, the vice chair of the Midlands RCGP Faculty & Postgraduate Dean for the UK's Medical Defence Service. The morning followed with wonderfully presented talks such as, 'Life as a trainee', 'Medicine Abroad' and 'Social Prescribing'. After lunch, we had 'Design your own workshop' where attendees could select to learn about a variety of special interests, delivered by esteemed GPs. We also hosted a poster presentation kindly judged by Prof Protheroe & Prof Chew-Graham, with two lucky winners. Our event gathered money for a local charity, The Gingerbread Centre, with our popular raffle prizes raising over £100. The day ended with a panel of 5 GPs answering any remaining questions we had.

This was the first time Keele GP Society have hosted such a large event and, as a society, we are very proud of what we have achieved. Our goal for this conference was to show students how a career in general practice can open up endless opportunities and hopefully has allowed attendees to see how much promise and excitement there is in this career pathway. We are fully fledged #TeamGP



Megan Robertson & Becca Woodbridge Year 5 Medical Students

## Charing Cross Symposium



Recently Kane Treadwell, Simran Parmar and Connor Henry-Blake had two abstracts accepted to an international conference

“Charing Cross Symposium” on 19th April 2019. Both abstracts were looking into the difference in survival of octogenarian patients undergoing either EVAR or open repair for elective unruptured abdominal aortic aneurysms. This is a particularly hot topic due to a recent proposed change to the NICE guidelines in the management of these patients.

Simran Parmar presented one abstract as a poster entitled “The impact of baseline renal function on the 5 year mortality in octogenarians undergoing elective EVAR followed up with CT angiogram”.

Kane Treadwell presented an abstract as an oral presentation entitled “A comparison of survival after endovascular and open repairs of unruptured elective infrarenal abdominal aortic aneurysms in octogenarians” and went on to win a Certificate of Merit for an outstanding presentation.

Connor Henry-Blake, the youngest of the three, is due to present an abstract at the West Midlands Surgical Society conference later in May.

Both abstracts were supervised by Mr Rajagopalan, Mr Jaipersad and co-authored with Mr Pherwani. The whole team are very proud of these achievements and look forward to continuing with this exciting area of research.

**Kane Treadwell, Year 4 Medical Student**

## British Society of Parasitology Meeting

Maria Joan (MJ) van Veelen, a third year medical student, and Professor Paul Horrocks recently attended the Annual Spring Meeting of the British Society of Parasitology (BSP). Held between the 15th and 17th of April at the University of Manchester, this meeting provided MJ with the opportunity to present her poster entitled “Killing quickly - validation of an improved Rate-of-Kill assay to support antimalarial discovery”. This poster provided a report of her 10-week placement, held last summer, on a Vacation Scholarship funded by the British Society of Antimicrobial Chemotherapy.

During the meeting, MJ and Professor Horrocks attended streamed sessions exploring host-pathogen relationships, interventions and the ecology of parasitic systems. Professor Horrocks, as the BSP Honorary General Secretary also hosted a lecture by Professor Janet Hemingway, the recently retired Director of the Liverpool School of Tropical Medicine, which marked her award as an Honorary Member of the BSP. The meeting also saw the inaugural award of the President’s Medal, an award introduced to mark the contribution of Early Career Researchers. The poster sessions were well attended, with many positive comments made about the “spin a drug” app that accompanied MJ’s poster.

Research conferences are a fantastic opportunity for research students, as well as more established researchers, to listen to new research as well as, perhaps more importantly, to form new contacts – and often at break times whilst

reviewing posters – to conduct new research, or explore future career opportunities.



**Maria Van Veelen, Year 3 Medical Student**

## Brazilian Student Visit

In our University we have a month during the 5th year in which we can take an elective of our choice in any University that has a partnership with ours. We chose England because of the public health system and the convenience of already speaking the language. The Brazilian students that came last year really enjoyed their stay and strongly recommended the elective at Keele.

During our stay, our expectations were exceeded. We received a lot of help to get accommodation at a great building on the campus. Our timetables were individually planned in order to provide an unique experience to each one of us. The Consultants, Professors and students at the hospital were really thoughtful and keen to include us into the discussions of the routine.

It was interesting to note the difference in epidemiology between Brazil and England. While we have both acute infectious diseases and chronic conditions at the same rate, here we could see a prevalence of chronic and autoimmune diseases. Also, it was interesting to see how much British patients are empowered and informed about their conditions and how they can decide which course they want to take as a treatment.

A point that surprised us is how well the multidisciplinary team works at the hospital and the GP placements. The practice is less centered on the figure of the doctor and values more the individuality of each professional. Furthermore, the communication between the GP and the hospital works better here than in Brazil. The GP in the UK plays a more central role in the care of the patient. At the same time, the appointments are shorter and very focused on the complaints that brought the patient to the service.

Another difference that we noticed is that the students in Brazil have more designed functions and responsibilities regarding the inpatients, with assigned beds for each student. Also, we always do a full physical examination in every appointment.

Overall, it has been a great experience for us, contributing to our personal and professional growth. We are very grateful for all the attention dispensed by Angela Carryer, Beth Sherratt, Kate Evans and all the students and staff that received us during our stay.



From left to right: Maria Fernanda de Paula Megale, Andrea Boucas Caldeironi, Beatriz Gomes Rodrigues, Arthur Pollo Deonizio, Ana Carolina Rangel Andrade

## Alice Christmas Charity Appeal

Keele Paediatric Society would like to say a huge thank you to all staff and students for their generosity in our Christmas appeal with Alice Charity. We received £460 worth of donations of Christmas gifts for disadvantaged local children and Alice Charity was hugely grateful for your generous donations.

We would like to thank you all for your kindness and especially thank the reception staff at the CEC and Medical School for their assistance.



Keele Paediatrics Society



## Aspire Research Showcase and Bursary Scheme 2019

The ASPIRE Spring research showcase was held at the School of Medicine in March 2019. Talks and posters were presented by students who had undertaken summer projects and intercalated degrees. The invited speakers were Dr James Kilgour, Editor of the British Student doctor journal who spoken about academic publishing, and cardiologist Dr Shing Kwok who spoke about academic foundation programmes.

The presentations by Keele medical students were highly commended for their excellent standard. Prizes were awarded for the best talk and poster. Dr Kilgour later commented "I came away from the afternoon very much inspired by the fantastic work of your students – I was extremely impressed by the projects and their enthusiasm towards research."

Professor Divya Chari and Dr Samantha Hider, the leads for the ASPIRE programme successfully won a third national funding award from the Academy of Medical Sciences and Wellcome Trust in 2018, to support the programme. The programme also received very generous support from the North Staffordshire Medical Institute in 2017 and 2018.

The ASPIRE Winter research showcase will be held in November 2019.

The ASPIRE summer internship scheme is also running in 2019, allowing students to undertake a wide range of medical research projects.

**Divya Maitreyi Chari, Scientific Lead, ASPIRE Research Programme**

## Keele Medical Student Highly Commended In Prestigious Research Competition

Third year medical student Jacquelyn Walsh-House received the commendation for her entry in the George Lewith prize, an award scheme set up in memory of the late general practice academic, George Lewith.

The judges praised Jacquelyn's reflection on her research, titled 'GP perspectives of perinatal anxiety; implications for medical education'.

Jacquelyn was supervised by Professor Carolyn Chew-Graham, of Keele's research institute for Primary Care and Health Sciences. She helped with a study exploring health care professionals' views on perinatal anxiety, having been awarded ASPIRE funding during her first year, which enables medical students to engage with academic research.

Jacquelyn said: "The lecturers were very encouraging about me entering for this award, as it gave me an opportunity to go into more detail about what I have done and to reflect on my contribution towards the research."

During her work with Professor Chew-Graham and her colleagues, Jacquelyn has also been invited to present her contributions to the research at a number of conferences and other academic events.

Professor Chew-Graham said "Jacquelyn has presented this work at a number of conferences and is a co-author on a manuscript reporting this study, which has just been accepted for publication in the British Journal of General Practice. Jacquelyn is conscientious and motivated, and an absolute pleasure to work with. Her motivation is further illustrated by her submission for the George Lewith prize."

*Redacted and reproduced from Keele News*

## Keele medical students on SOLACE fieldtrip in rural Philippines



Harriet Howells and Frances Gibson, Syra Petalio and Danielle Uayan

SOLACE is an interdisciplinary global health project, led by Dr. Lisa Dikomitis. It is jointly funded by the UK's Arts and Humanities Research Council and the Medical Research Council, through the Global Challenges Research Fund. The SOLACE collaboration with Ateneo de Manila University has brought together researchers across many disciplines, from anthropology to psychology and even documentary theatre to create a powerful interdisciplinary network.

In January 2018, the SOLACE team held a competition within Keele and Ateneo de Manila universities, proposing two winners at each. The challenge was to create a piece of creative work on global health without declaring any other prerequisites. After many hours of painting and writing, it was announced that we, Frances Gibson and Harriet Howells, were the winners at Keele, along with Syra Petalio and Danielle Uayan from Ateneo. We were awarded with the remarkable prize of a fieldtrip to the province of Northern Samar, the Philippines.

During our fieldtrip, we lived with local people and immersed ourselves in their daily lives to gain an insight into what it means to live in one of the poorest provinces in the Philippines, where around half of the inhabitants live below the poverty line. It was

remarkable to discover the rich spirituality and religiosity of the people, while learning about their health beliefs and behaviours. Shadowing the dedicated healthcare professionals and community health workers emphasised the barriers that patients must overcome to receive care, such as the cost and the invariably long journey to the hospital. We were also able to learn about traditional healers, who are believed to heal muscle aches and pain.

We have tried to captivate some of our experiences in blogs and podcasts and these are available at [www.solace-research.com](http://www.solace-research.com).

Frances Gibson & Harriet Howells, Year 2 Medicine Students

## ASME 2019 small grant award



Congratulations to Toni Robinson who has been awarded £1000 for her Masters in Medical Education research project "How do medical students' experiences inform their opinions of general practice and its potential as a future career choice? A realist synthesis". The grant will be used to support stakeholder meetings.

As part of the award, ASME has invited Toni to present her paper at the Annual Scientific Meeting 2020 in Liverpool.

Dr Janet Lefroy, Senior Lecturer in Medical Education

## Student Poster Presentation at Trauma Care Conference

The trauma care conference is an annual gathering of distinguished guests and speakers from a wide variety of trauma related specialties show-casing everything trauma related in the UK and from across the world. The 5-day conference has a variety of programmes running from Trauma in the Emergency Department, Paramedic Programme, PHEM/HEMS\* Programme and even a Students and CFR programme.



This year, a number of students from Keele Medical School presented a series of posters across all the days. Jack

Guishard, a 4th year medical student, presented his poster on a pre-hospital emergency anaesthesia audit looking at what factors influence how doctors adjust their doses and drug regimens. Ben Walters, a 4th year medical student, presented his poster on an audit of trauma deaths in those aged under 65 looking at why they died and whether any systemic failings could be identified.

With the Royal Stoke University Hospital being one of the leading major trauma centres in the country, it's no surprise that the students from the medical school have a keen interest in the vast amount of research that the hospital is involved in. Keele medical school also have their own Trauma Day Conference held once a year giving students from all over the country an opportunity to learn and get hands-on experience with trauma.

\*PHEM - Pre-hospital emergency medicine  
HEMS - Helicopter emergency medical service

**Jack Guishard, Year 4 Medical Student**

## Experience as an Overseas Medicine Student

Studying medicine as an international student has given me exposure to unique experiences that home students would often find quite normal. For example in Uganda buses are rarely used for short distances, so early on I found myself being late to occasions because I would watch the bus leave while standing at the opposite bus stop. I found a few phrases quite confusing like how being "fit" apparently has nothing to do with how many miles you can run and I'm still trying to figure out how a cold turkey makes people stop smoking at once.

The kindness and courtesy shown by the people really surprised me. Once I went into a store to get a snack and they weren't accepting card payments and this girl just offered to pay for me. She probably didn't think much of it but to me that small act of kindness towards a stranger really showed me what it means to be human and I'll always remember that experience. Bringing the attention back to the med school, I love the friendly and supportive environment provided by all members of staff. They answer questions faster than you can create them and we have the pleasure of knowing our lecturers on a first name basis. You will often be given extra advice on how to improve yourself as a human being and not just as a doctor. I have also found PBL to be a great strategy but only if you actually do the work.

**Andrea Magezi, Year 1 Medical Student**



## Teddy Bear Hospital

Teddy Bear Hospital has been very busy this year from numerous school visits to fundraising events such as 'Hug a Bear' and cake sales.

On Wednesday 13th February, we hosted our first ever Community Health Day where over 75 children, aged 9-11 years old, from local schools were invited to the David Weatherall building for an afternoon of first aid, asthma awareness and lots of fun learning important life-saving skills such as how to do CPR. They participated in various stations relevant to their current and long-term health, including a mental wellbeing activity. Each child left the School of Medicine with a goody bag comprising of badges, mental health bookmarks, healthy recipe ideas, snacks, a certificate of involvement and much more. It was an enjoyable occasion for the children, teachers and of course, our volunteers and committee members. We would especially like to thank St John's Ambulance for their help running the event.



We are pleased that our efforts have been rewarded by being shortlisted for a National Societies Award, taking place in Manchester in April. To everyone who has been involved in the society this academic year – thank you!

**Sarah McCarthy Year 2 Medical Student**

# Staff changes

## At David Weatherall Building

### Welcome to:

Dave Goddin, QA & Evaluation Co-ordinator (welcome back Dave!)

Julie Beddows, Clinical Teaching Fellow in Medical Education

Magdy Abdalla, Clinical Tutor in Medical Education

Ashley Stephen, Teaching Fellow in Anatomy

Ilaria Russo, Lecturer in Bioscience

Scott Guimond, Lecturer in Bioscience

Matt Kose-Dunn, Associate Teaching Fellow in Bioscience (maternity cover)

Olena Cresswell, Sunderland Project Co-ordinator

Susan Miller, Teaching Contracts Officer

Alice Moulton, Research Assistant to Peter Yeates

Rebecca Edwards, PhD student of Peter Yeates

Giles Roberts, Clinical Teaching Fellow with a focus on Assessment, who starts in August 2019

### Farewell to:

Karen Berry, Administrator, School Executive Office

Russell Crawford, Senior Teaching Fellow in Bioscience

Anujeet Panesar, Clinical Lecturer in Medical Education (leaves at the end of June 2019)

Luke Brindley, Clinical Teaching Fellow with a focus on Assessment (leaves at the end of July 2019)

## Postgraduate Medicine, Keele Hall

### Welcome to:

Alison Pooler, Course Director, Physician Associate Studies  
Rossana Carter, Teaching Fellow in Physician Associate Studies

Karen Berry, Administrator (starts early June 2019 – welcome back Karen!)

Alina Andras, Lead for Dissertation Module, Masters in Medical Science

Philippa Bailey, Administrator, Physician Associate Studies

### Farewell to:

Jennifer Cowpe, Senior Teaching Fellow in Clinical Leadership & Management

Alex Strivens-Joyce, Curriculum Developer/Teaching Fellow in Physician Associate Studies

## Shrewsbury & Telford Hospitals Trust

### Welcome to:

Patricia Cowley, Deputy Hospital Dean

George Kirby, UG Tutor in Surgery

Rajesh Jain, UG Tutor in Surgery

Nibedan Biswas, UG Support Tutor in Women's Health

Chris Clulow, Teaching Fellow Anaesthetics

Sam Craik, Teaching Fellow Medicine

Ryan Jones, Teaching Fellow Anaesthetics

Amy Price, Teaching Fellow Surgery

Subramanian Kumaran, UG Tutor in Medicine

Adrian Marsh, UG Tutor in Medicine

Sourabh Mukhopadhyay, UG Tutor in Paediatrics

Anuja Sagdeo, UG Tutor in Acute Medicine

Ian Tanswell, UG Tutor in Acute Medicine

Guy Calcott, UG tutor in Women's Health

Kate Ironmonger, Undergraduate Administrator

### Farewell

David Wallbridge, Deputy Dean and Year 4 Lead

Megan Bevis, Teaching Fellow in Anaesthetics

Bethan Lewis, Teaching Fellow in Anaesthetics

Ben Matthews, Teaching Fellow in Anaesthetics

Charlotte Verney, Teaching Fellow in Anaesthetics

## Midlands Partnership Foundation Trust

### Welcome to:

Chandan Aladakatti, UG tutor in Psychiatry, Redwoods Centre

Yvonne Eboka, UG Tutor in Psychiatry, Redwoods Centre

Rajes Sukale, UG tutor in Psychiatry, Redwoods Centre

## UHNM/RSUH Hospital Campus

### Welcome to:

Shiva Bikmalla, Respiratory Medicine Lead at UHNM

Philip Cross, Caretaker, Medical School

Caterina Liggett-Wright, John Blackwell, Aditya Narain, Glenn Davies & Katie Hill, Clinical Teaching Fellows, who start in August 2019

### Farewell to:

Hazel Horridge, Teaching Support Co-ordinator

Sheila Evans, Teaching Support Administrative Assistant

Beth Hine, Receptionist/Administrative Assistant

Jonathan Slater, Apprentice Reception/Administrative Assistant

Beth Sherratt, Rachel Chubsey, Katherine Iles, Katelyn Monsell, Kate Evans, Clinical Teaching Fellows who leave at the end of July 2019

# FORTHCOMING EVENTS

## Soapbox Science

On Saturday 6 July 2019, Soapbox Science will be hosting their first event in Parliament Row, Hanley from 12pm-3pm.

This will be a unique opportunity to learn about scientific research done locally, straight from the scientists themselves. The event is being sponsored by Keele University and several of our own lecturers will be contributing.

<http://soapboxscience.org/soapbox-science-2019-stoke-on-trent/>

## Articles for MedNews

MedNews is currently produced twice a year, in December and June. News articles can range from something academic, (a conference or an award), to something personal, (a charity event, family news), to an event you wish to publicise.

You can be as brief as you like but we ask for a maximum of 250 words if you wish to submit an article. Relevant accompanying photos are welcome. We look forward to hearing from you.

Susan Farrington, Deputy Admissions Manager,  
School of Medicine, [s.m.farrington@keele.ac.uk](mailto:s.m.farrington@keele.ac.uk)

## Social Media

As part of our marketing strategy we now utilise social media platforms to communicate with potential students (and other target audiences).

We currently have the following channels:

Twitter: <https://twitter.com/KeeleMedSchool>

Facebook:

<https://www.facebook.com/KeeleMedSchool/>

Instagram:

<https://www.instagram.com/keelemedschool/>

If you'd like to add anything to our social media channels then please email the content to Mike Lancaster (below) (text and preferably a photo or two). This could be anything from: news, celebrating student achievements, information about conferences and events etc.

Michael Lancaster, Media Production Manager

[m.lancaster@keele.ac.uk](mailto:m.lancaster@keele.ac.uk)