



Excellence with Impact- The personal to the national and beyond

Keele-June 2019

Lesley Thompson

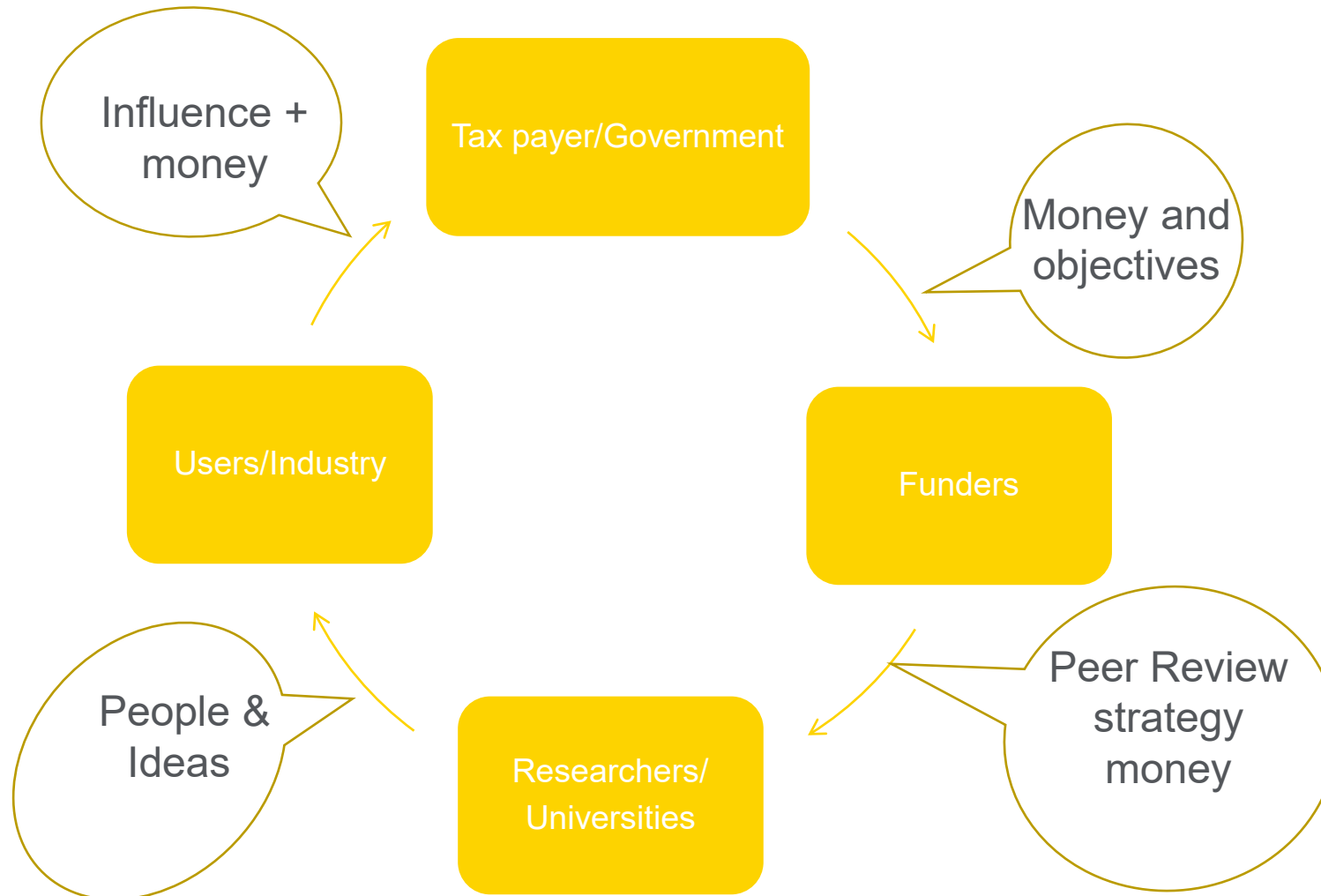


My back story

- PhD biology
- Post Doc- 2 body Problem; **Husband Oxford**
- Joined SERC- 1989
- Portfolio expanded over time- Energy; Control& Instrumentation; Functional Material; Engineering; ICT; Associate Director- Health of Disciplines- **and 2 children**
- Secondment to BEIS along the way-
- Research Director- 2006- 2016
- Elsevier- Academic and Government Relations- **and a grandchild**



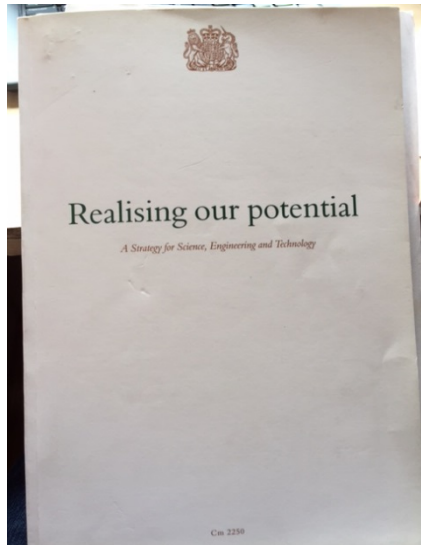
The Research Cycle- is simple really



So who drives who?

1993

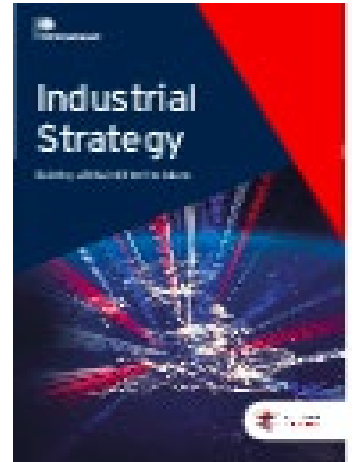
Realising our potential.



- Explicit focus on wealth creation and quality of life
- Revised Research Council structure
- Research Councils missions reformulated

2017

Industrial strategy.



- Focus on Productivity
- Research core
- UKRI- Innovation and Research formed
- Grand Challenges and Places

Steadily Increasing focus on Excellence and Impact

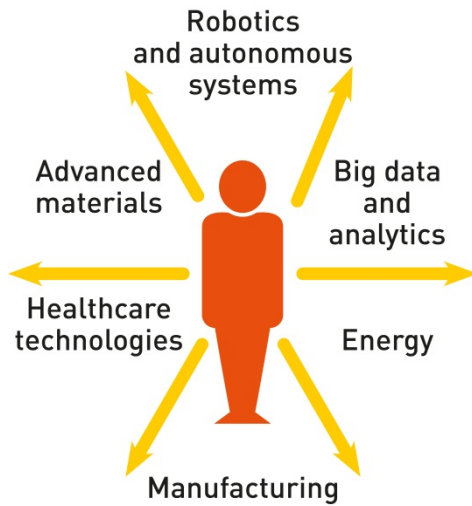
An example of my impact- CDT's

- 2000- LSI 15 workshops at universities across the UK identified opportunities and barriers
- Wellcome Trust- value of 4 year PhD centres
- 2001- £10m for Centres for Doctoral Training- Oxford, Edinburgh but extraordinary demand
- 2002- £25m for 2nd competition
- Worked closely with the CDT Directors to share best practice and learn

Expanded portfolio across EPSRC

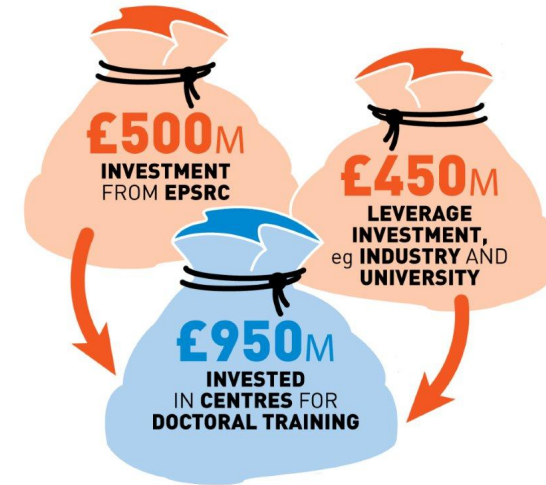
- 50% of PhD budget invested in CDTs
- Saw big impact of research quality and intensity
- 2012- targeted for additional Government investment
- Ran a national quiet lobbying process- Industry, University VCs/PVCs
- Negotiated costs with PVC's
- Outcome-

Centres for Doctoral Training- 2012 outcome



115

THE **NUMBER**
OF **CENTRES**



7,000+

THE **NUMBER** OF
STUDENTS THAT **WILL**
BE TRAINED
IN THE **CENTRES**

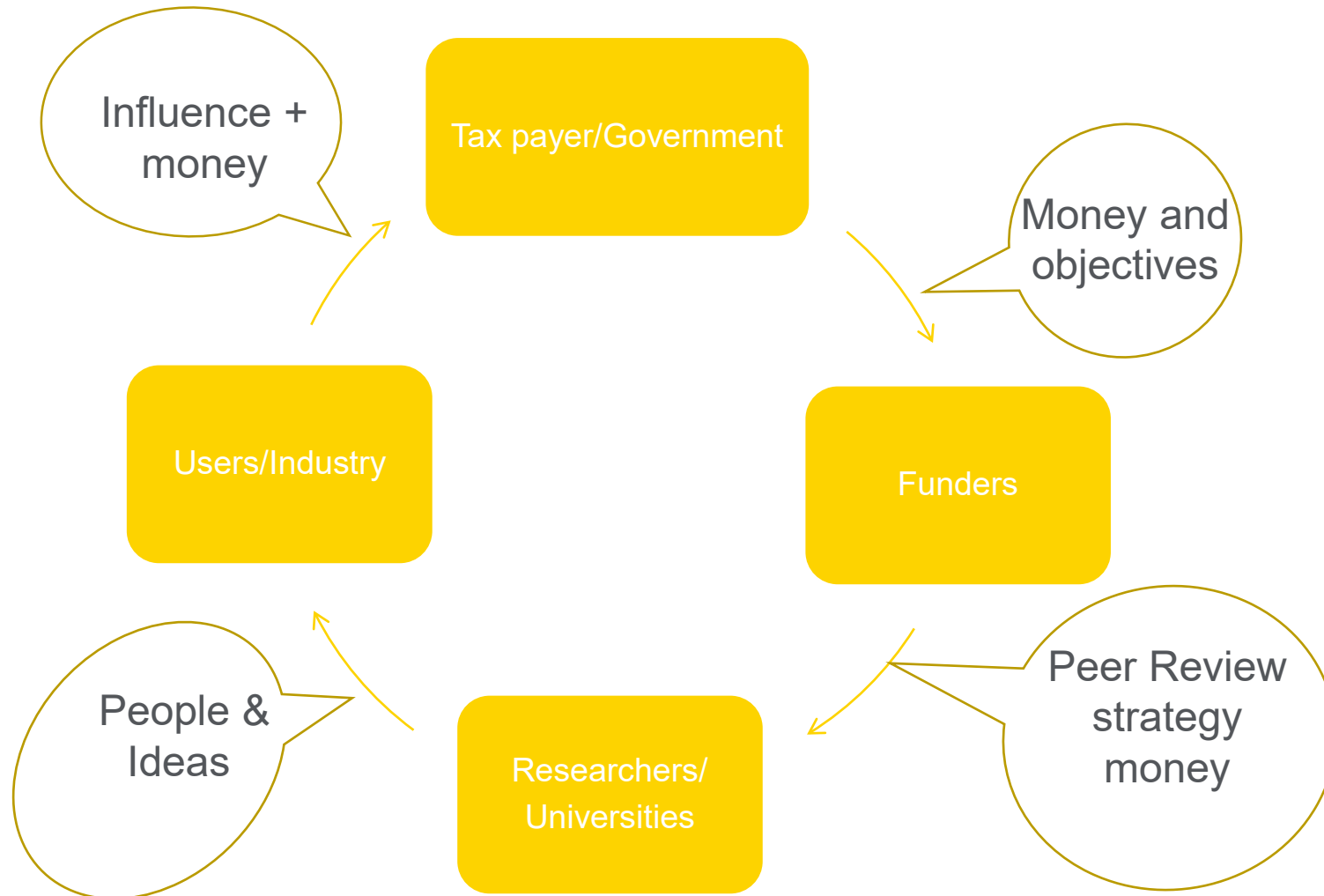
1,100

NUMBER
OF **PARTNERING**
COMPANIES

33

THE **NUMBER**
OF **UNIVERSITIES**

The Research Cycle- is simple really



2014 Research Excellence Framework

Introduced the assessment of impact alongside research excellence

A long journey since 1994, but the impact was clear

85% of case studies in EPS
involved EPSRC funded
research/researchers

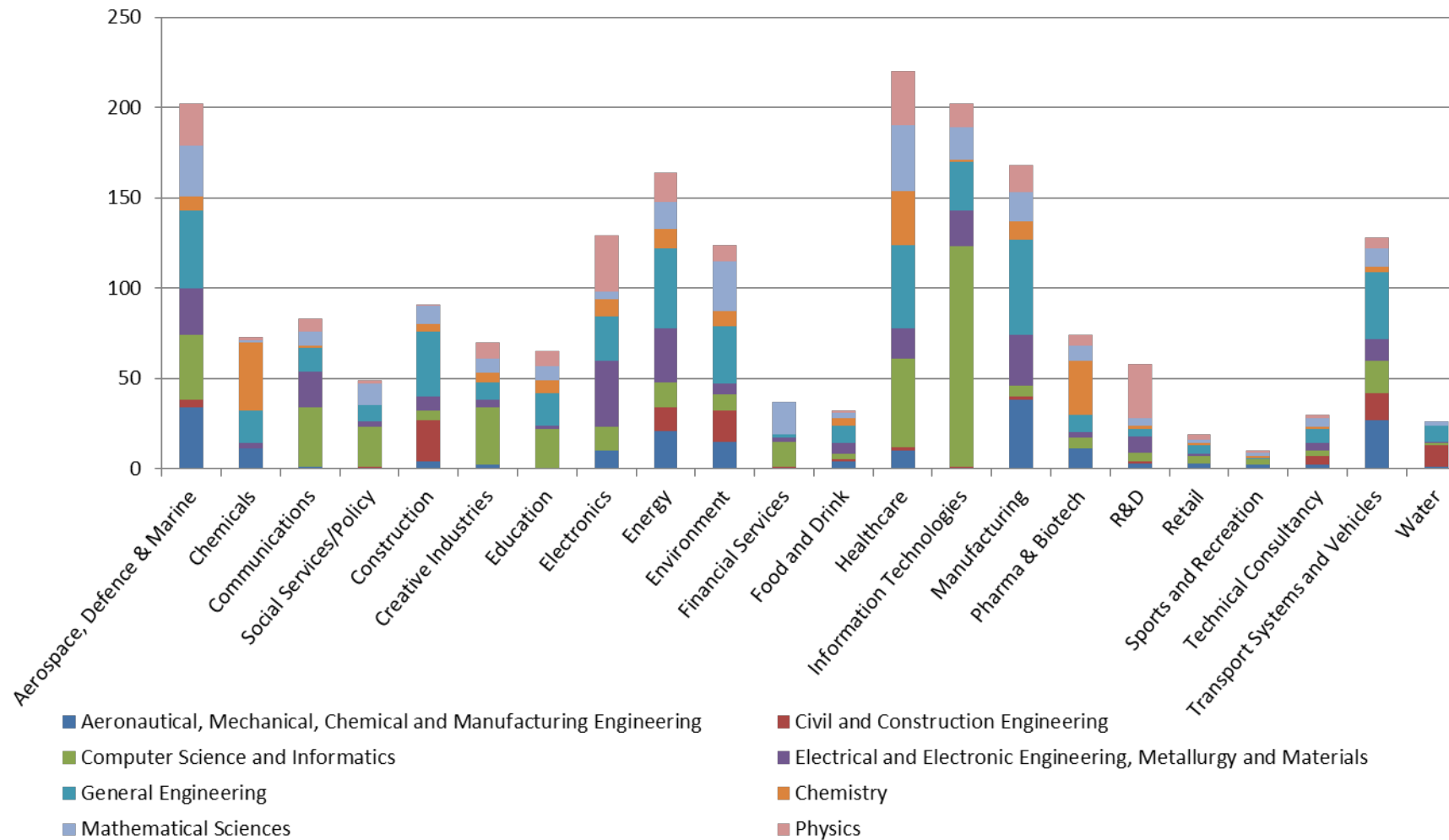
£1 billion of EPSRC
funding coupled with a similar level of
funding from government, EU and industry

£60 billion of economic activity

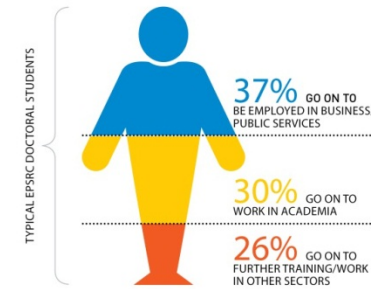
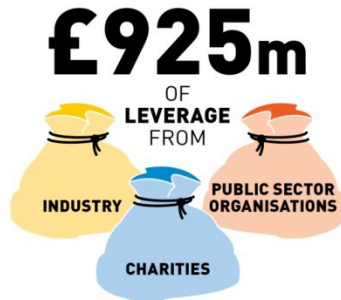
400 new businesses created,
employing 50,000 people and
contributing **£4 billion** to
the economy in revenue

£16 billion of cost savings in
the public and private sectors

REF 2014 impact case studies – distribution by sector and Unit of Assessment



Key facts-2015 when I left EPSRC

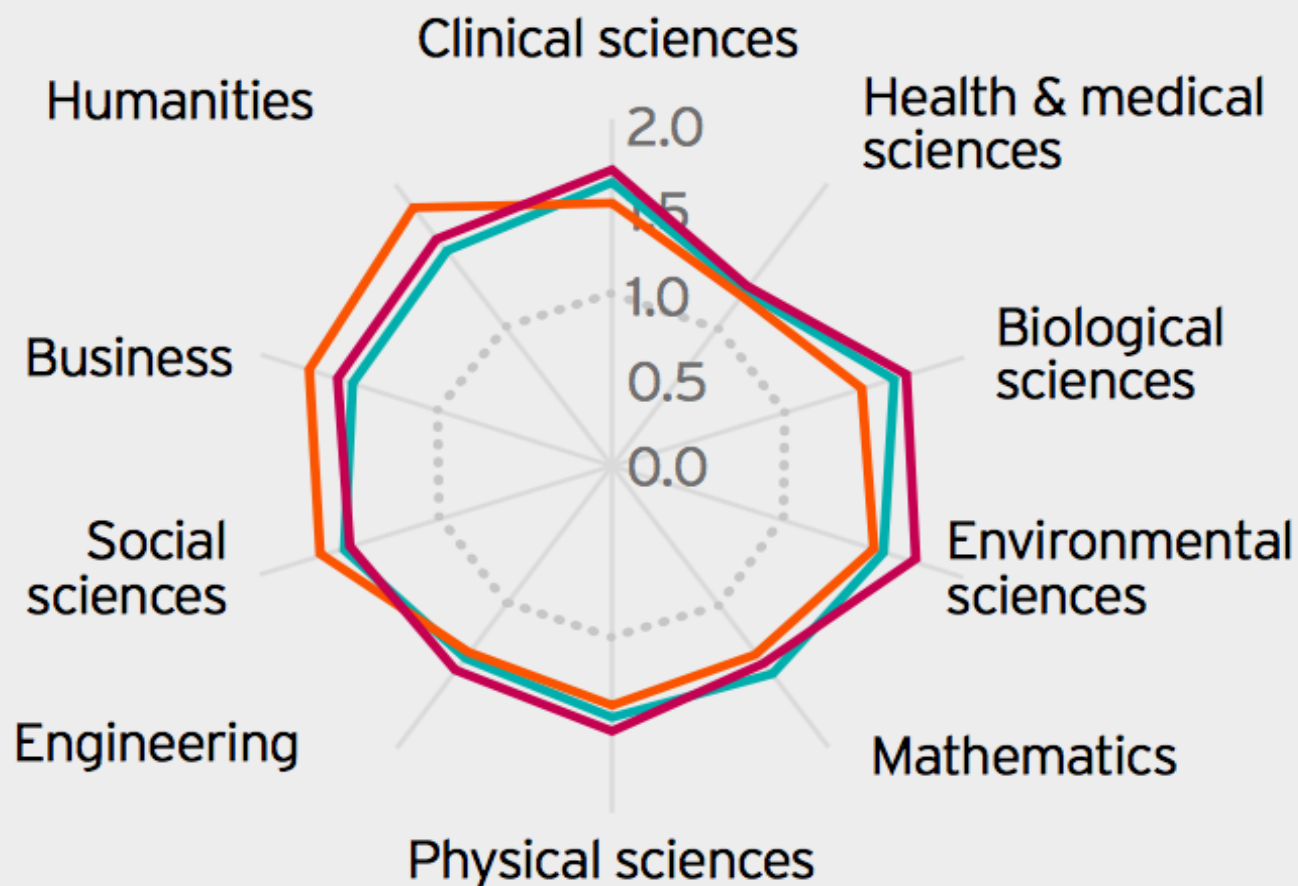


And did focus on Impact weaken Excellence?

And where Elsevier comes in!

The UK research base across research fields

UK field-weighted citation impact across research fields



2006 2010 2014 World Average (=1.0)



UK is a successful broad spectrum research nation

Source: Elsevier (2017) "International comparative performance of the UK Research Base 2016". A field-weighted citation impact of 1.0 represents

Impact of UK's focus on Impact?

THES- University Rankings

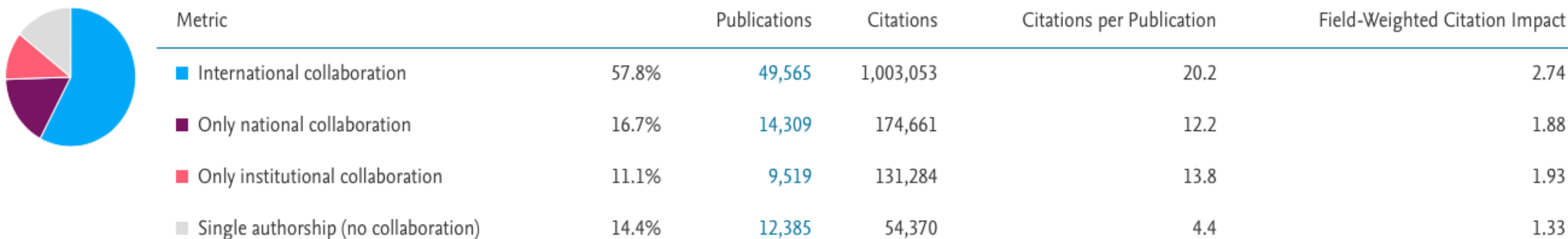
Rank	University	Rank	University
1	University of Oxford	13	University of Pennsylvania
2	University of Cambridge	14	UCL
3	Stanford University	15	University of California, Berkeley
4	MIT	16	Columbia University
5	California Institute of Technology	17	University of California, LA
6	Harvard University	18	Duke University
7	Princeton University	19	Cornell University
8	Yale University	20	University of Michigan-Ann Arbor
9	Imperial College London	21	University of Toronto
10	University of Chicago	22	Tsinghua University
11	ETH Zurich	23	National University Singapore
12	John Hopkins University	24	Carnegie Mellon

University of Oxford

Collaboration

[+ Add to Reporting](#) [Shortcuts](#) 

Publications at the University of Oxford, by amount of international, national and institutional collaboration



Academic-Corporate Collaboration

[+ Add to Reporting](#) [Shortcuts](#) 

Publications at the University of Oxford with both academic and corporate author affiliations



Keele data

Metric		Scholarly Output	Citations	Citations per Publication	Field-Weighted Citation Impact
International collaboration	45.3%	2,570	33,713	13.1	1.85
Only national collaboration	26.5%	1,506	13,522	9.0	1.70
Only institutional collaboration	12.0%	682	5,001	7.3	1.11
Single authorship (no collaboration)	16.2%	919	2,093	2.3	0.92

Keele –Academic Corporate collaboration

Metric		Scholarly Output	Citations	Citations per Publication	Field-Weighted Citation Impact
Academic- corporate collaboration	2.4%	137	4,396	32.1	2.91
No academic- corporate collaboration	97.6%	5,540	49,933	9.0	1.53

Lessons I have learnt- 6 degrees rule!

Individual

- Talk about your research broadly
- Go to meetings outside expertise- stay open
- Always think of Impact routes
- Understand the funding landscape
- Collaboration is a good thing

Organisation

- Encourage wider communication skills
- Encourage those who are generous with their networks
- Do you know who is coming on to campus?
- Remember women have smaller networks and collaborate less!

Impact- and now my son recognises what I do!



Thank you Keele and Trevor!

Coming full circle

We do make, ordain, create, and constitute the same Society, by the name of The President, Council, and Fellows of the Royal Society of London for Improving Natural Knowledge, one body corporate and politic, in fact, deed, and name, really and fully, and that by the same name they may have perpetual succession; And that they and their successors (whose studies are to be applied to further promoting by the authority of experiments the sciences of natural things and of useful arts, to the glory of God the Creator, and the advantage of the human race)”





Is it Excellence with Impact or Does Impact lead to Impact?

Thank you

