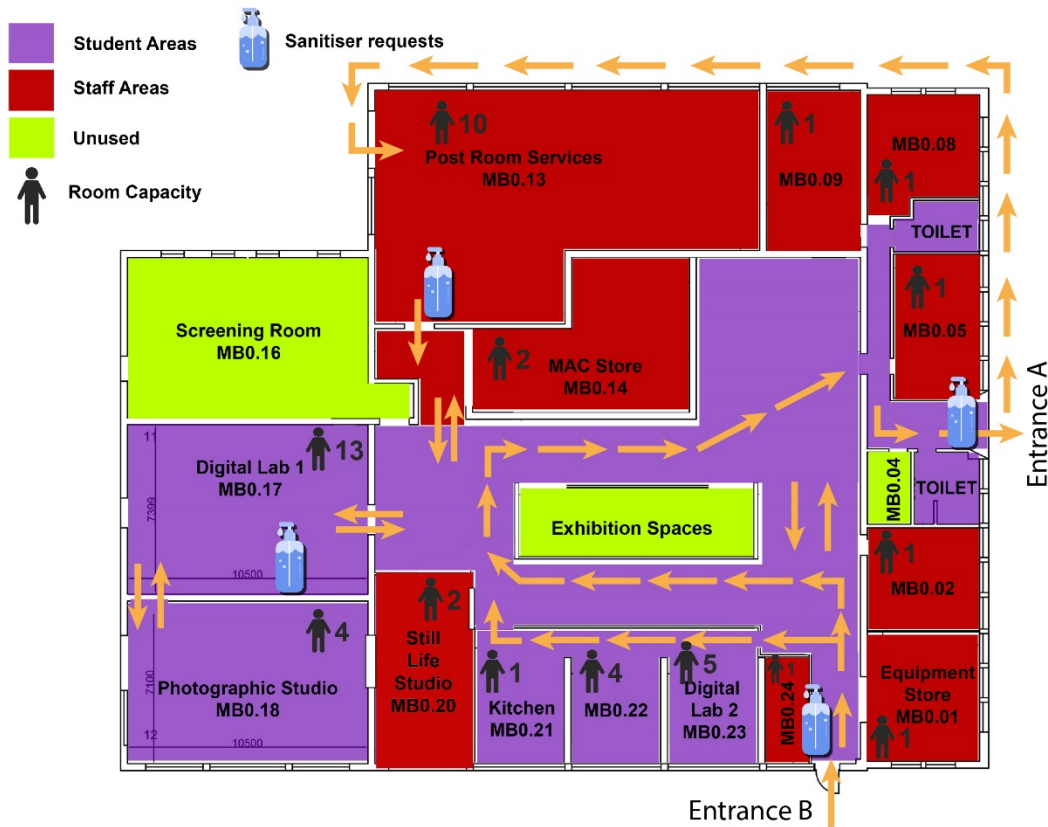


Media Building floor plan



As you can see from the suggested layout above, we are proposing only one way into the building: via the side door (Entrance B). This will greatly help to enforce a one-way system around the building. Students/staff will then exit the building via the main entrance (Entrance A). They can also exit via the fire doors at the back of the building in the event of an emergency.

The Salto access point on the entrance door (Entrance B) is non-touch and automatic, so users do not need to touch the door handle to open the door.

Location of hand sanitizer are shown above. The location in MB0.17 can be flexible, but there will need to be one in here as this will be one of the most used spaces.

MB0.14 is currently a store for Marketing MAC department. A small area of this room has been repurposed as a store for Media, to accommodate equipment and furniture that needs to be removed from Media rooms to enable new occupancy limits to be achieved.

Mezzanine floor in staff office MB0.09 will not be in use.

Staff working in the University's Post Room MB0.13 also use the building's toilets and small kitchen area. When needing to access the toilets or kitchen they will walk from the Post Room and join the one-way system. They will then exit the building at Entrance A and walk around the outside of the building and re-enter MB0.13 (as shown on the plan above).