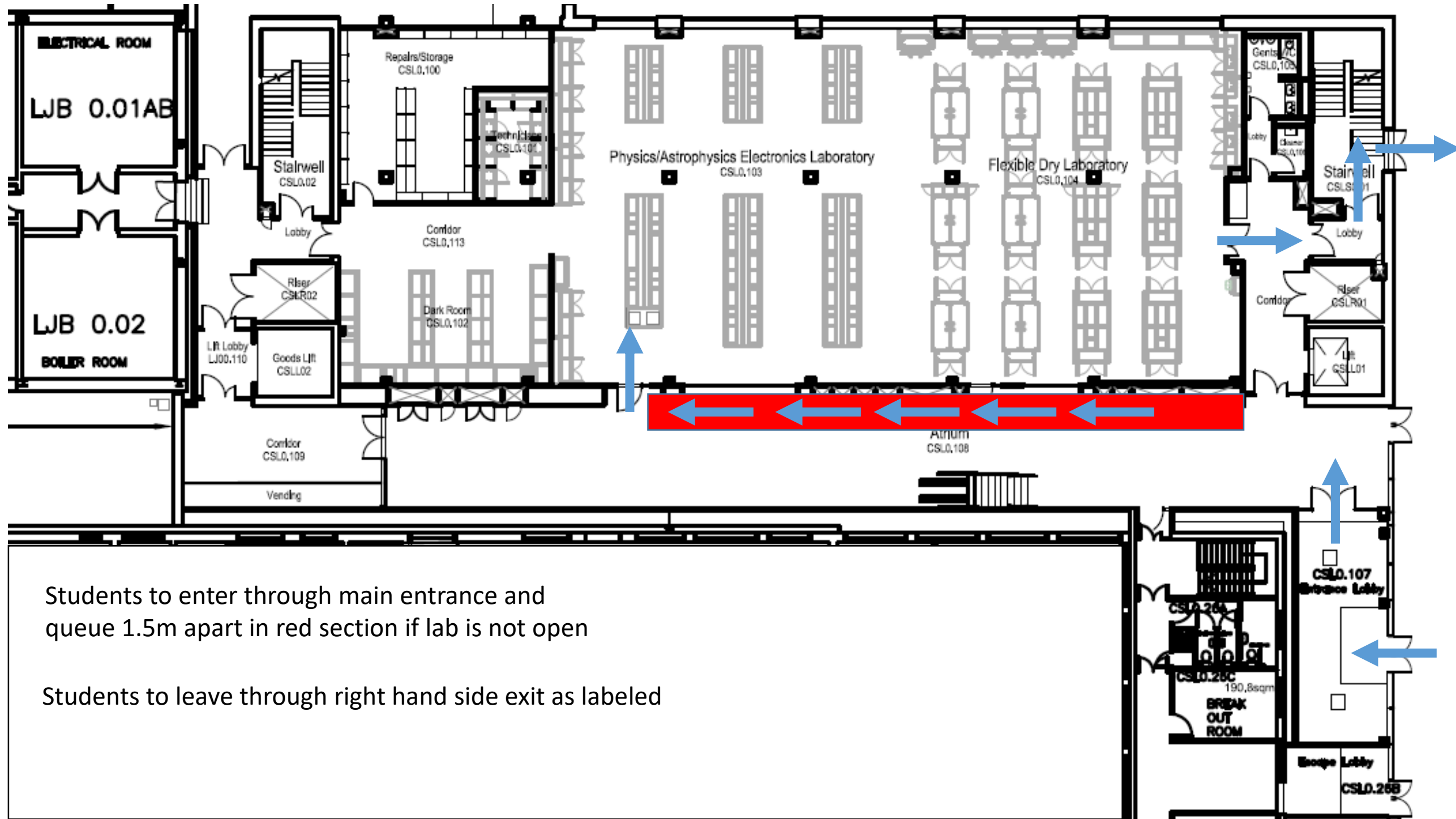


Ground Floor Entrance and Exit Plans



LJ1.80 Entry

Students will enter via the central CSL staircase, place their belongs in the appropriate locker and go straight into the lab. If there are more than 5 people in the green area using a locker, they are to wait on the red strip a minimum of 1.5m apart for one to become available.

LJ1.80 Exit

Students are to leave the lab via the same door, collect their belongs and leave via the left hand side stairwell of the CSL. Staff are to manage a staged exit to ensure a maximum of 5 students are using the lockers at any one time

Light Lab (CSL 1.106) Entry

Students will enter via the central CSL staircase, place their belongs in the appropriate locker and go straight into the lab. If there are more than 5 people in the green area using a locker, they are to queue on the red strip a minimum of 1.5m apart for one to become available.

Light Lab (CSL 1.106) Exit

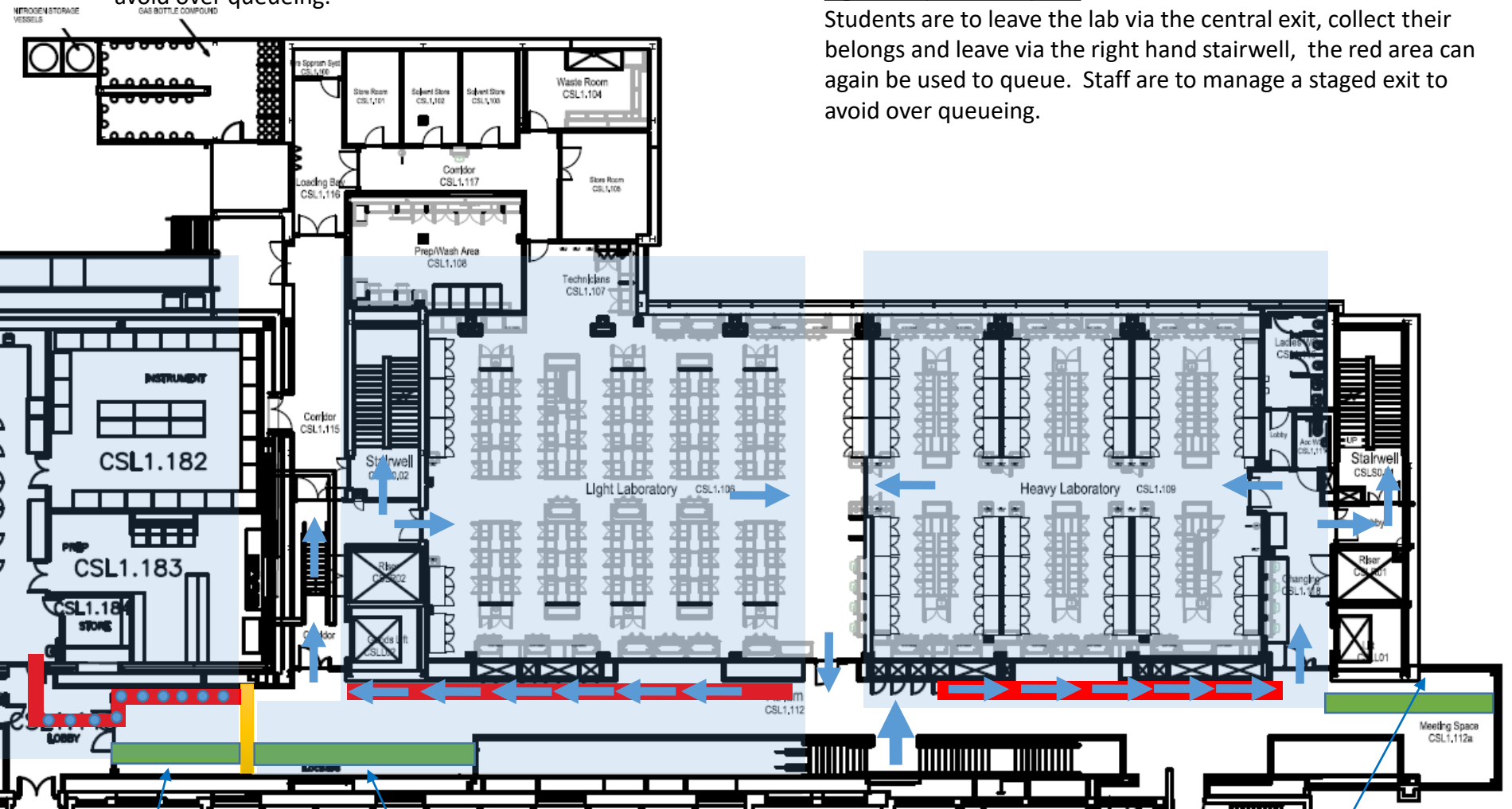
Students are to leave the lab via the central exit, collect their belongs and leave via the left hand stairwell, the red area can again be used to queue. Staff are to manage a staged exit to avoid over queueing.

Heavy Lab (CSL 1.109) Entry

Students will enter via the central CSL staircase, place their belongs in the appropriate locker and go straight into the lab. If there are more than 5 people in the green area using a locker, they are to queue on the red strip a minimum of 1.5m apart for one to become available.

Light Lab (CSL 1.106) Exit

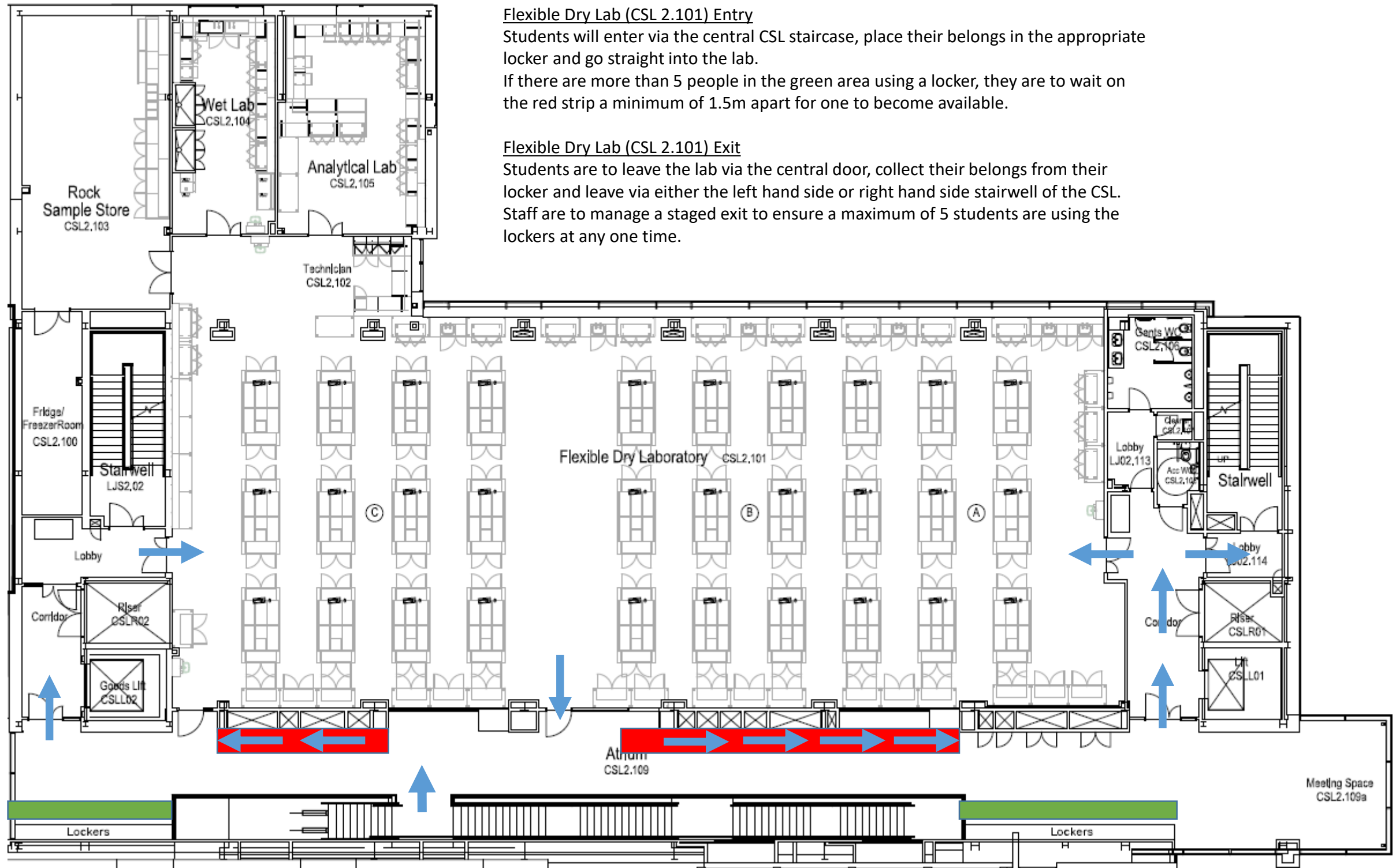
Students are to leave the lab via the central exit, collect their belongs and leave via the right hand stairwell, the red area can again be used to queue. Staff are to manage a staged exit to avoid over queueing.



LJ1.80 Lockers

Light Lab (CSL1.106) Lockers

Heavy Lab (CSL1.109) Lockers



Flexible Dry Lab (CSL 2.101) Entry

Students will enter via the central CSL staircase, place their belongs in the appropriate locker and go straight into the lab.
 If there are more than 5 people in the green area using a locker, they are to wait on the red strip a minimum of 1.5m apart for one to become available.

Flexible Dry Lab (CSL 2.101) Exit

Students are to leave the lab via the central door, collect their belongs from their locker and leave via either the left hand side or right hand side stairwell of the CSL.
 Staff are to manage a staged exit to ensure a maximum of 5 students are using the lockers at any one time.

Students to enter via central staircase and through entrance on the right hand side.
Students to exit either through right hand side or left hand side exit and down either side stairwell

