



Fire Escape Plan

**FIRE ACTION**
If you discover or suspect a fire

**Sound the alarm by operating the fire alarm call point**

**Do not attempt to fight the fire unless you are trained to do so**

**Immediately evacuate the area and close all doors to the space.**
On activation of the fire alarm, you must leave the building immediately by the nearest safe available fire exit



- Do not take risks
- Do not stop to collect personal belongings
- Do not re-enter the building for any reason unless authorised to do so

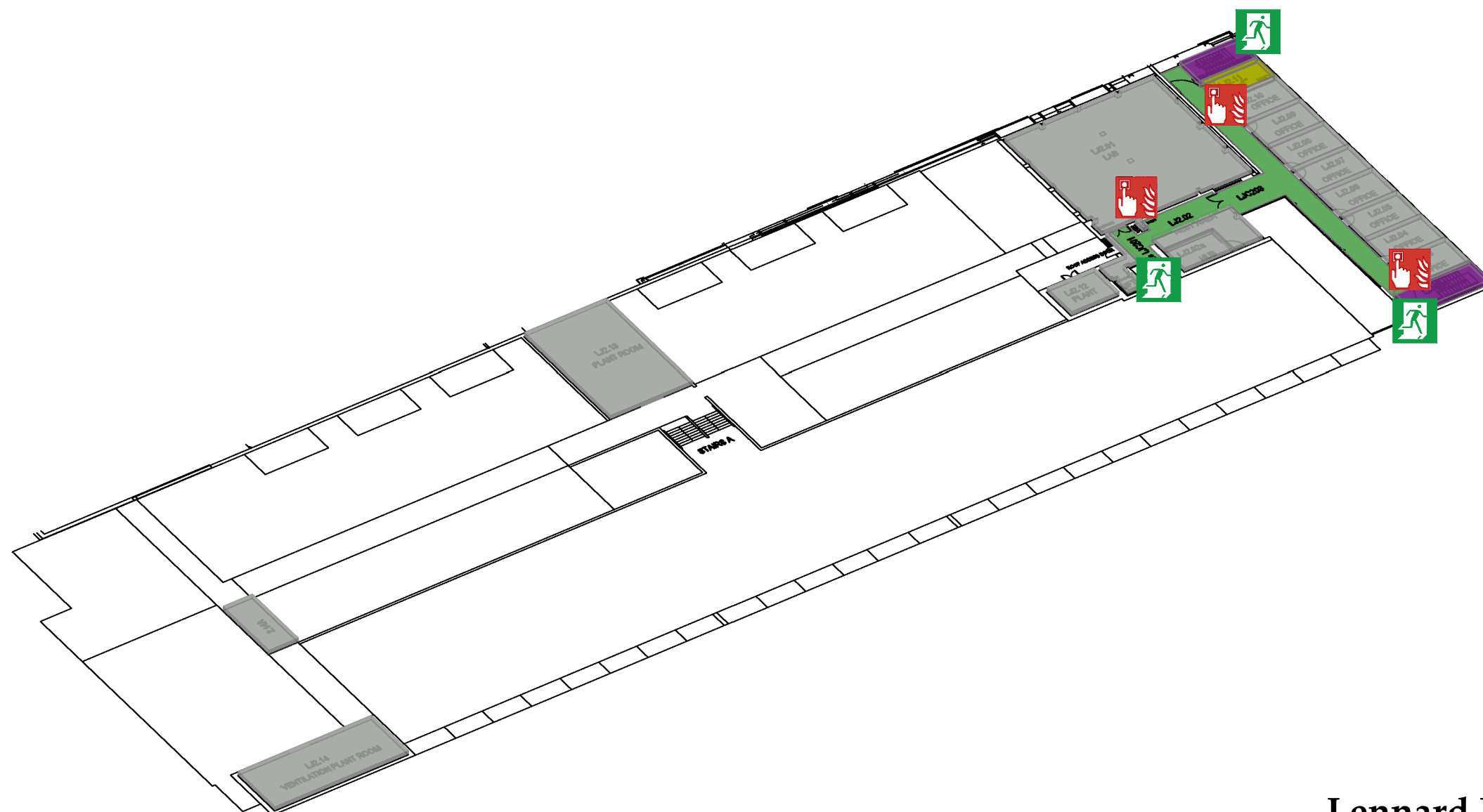
**Report to the designated assembly point**
Central Drive

**Contact Campus Safety Team 01782 733999 to confirm a fire alarm activation**

Assembly Point is allocated to the buildings showing in BLUE below



Map showing buildings with assembly points (in blue): B007B, B007A JACK ASHLEY, WET LAB B009A, CENTRAL SCIENCE LABS B009B, LENNARD JONES LABORATORY B009, HUXLEY BUILDING B016, and CENTRAL DRIVE. Access points 7, 9, 10, and 2 SUB are also indicated.



Fire Alarm
Call Point



Assembly Point



Fire Exit



Wheelchair Accessible
Fire Exit



Fire Escape Route



Fire Escape Stair



Accessible WC

Lennard Jones
Second Floor