

# Fire Escape Plan



## FIRE ACTION

If you discover or suspect a fire



**Sound the alarm by operating the fire alarm call point**



**Do not attempt to fight the fire unless you are trained to do so**



**Immediately evacuate the area and close all doors to the space.**

**On activation of the fire alarm, you must leave the building immediately by the nearest safe available fire exit**



- Do not take risks
- Do not stop to collect personal belongings
- Do not re-enter the building for any reason unless authorised to do so

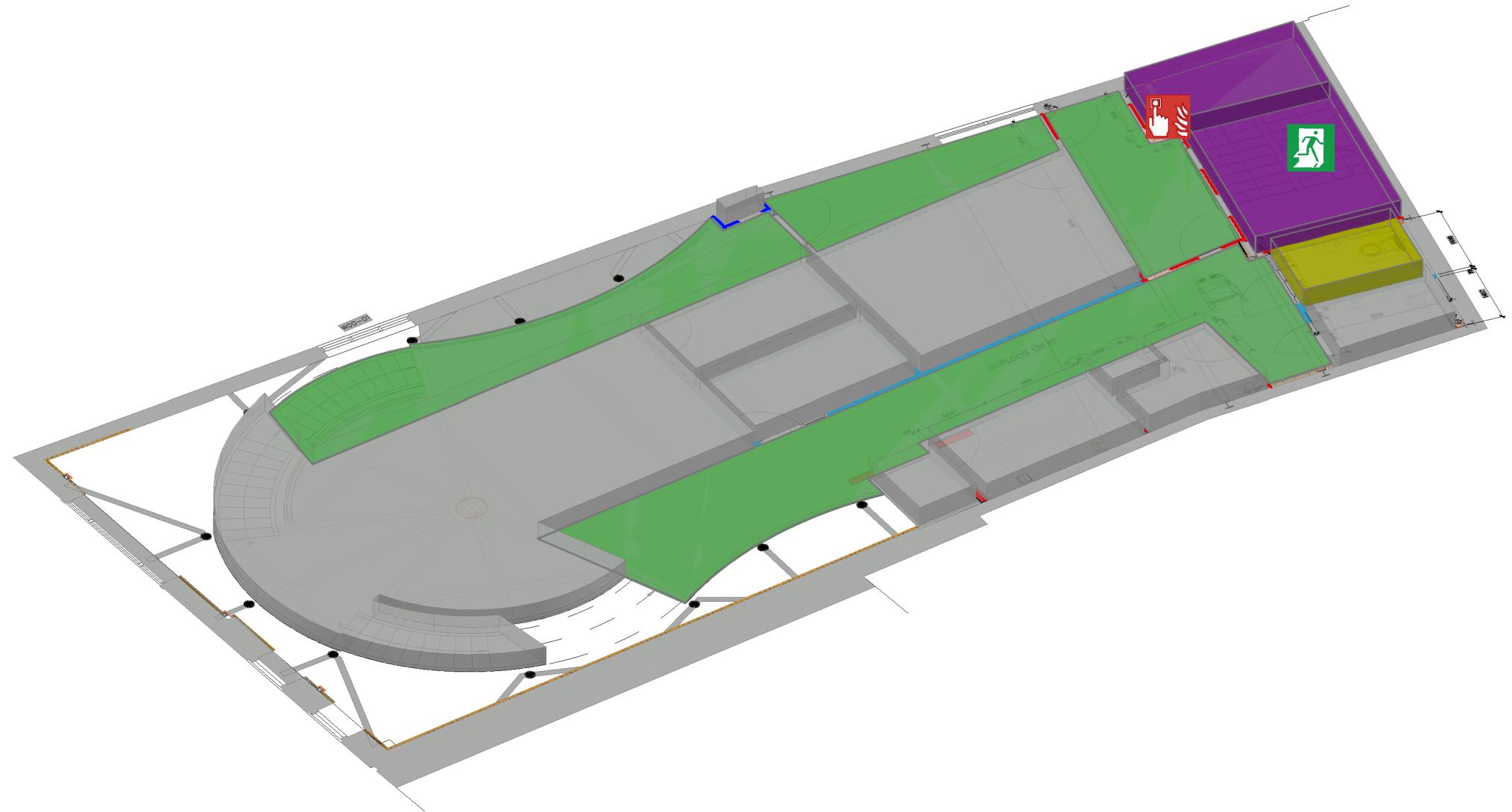
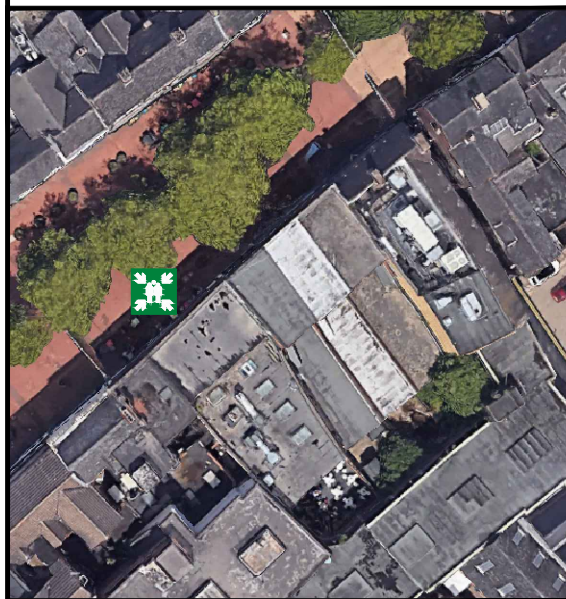


**Report to the designated assembly point**  
Iron Market Walk Way



**Contact Campus Safety Team 01782 733999 to confirm a fire alarm activation**

Assembly Point is allocated to the buildings shown below



Fire Alarm Call Point



Fire Exit



Assembly Point



Wheelchair Accessible Fire Exit



Fire Escape Route



Fire Escape Stair



Accessible WC

**Keele In Town**  
*First Floor*