

# Fire Escape Plan

## FIRE ACTION

If you discover or suspect a fire



Sound the alarm by operating the fire alarm call point



Do not attempt to fight the fire unless you are trained to do so



Immediately evacuate the area and close all doors to the space.

On activation of the fire alarm, you must leave the building immediately by the nearest safe available fire exit



- Do not take risks
- Do not stop to collect personal belongings
- Do not re-enter the building for any reason unless authorised to do so

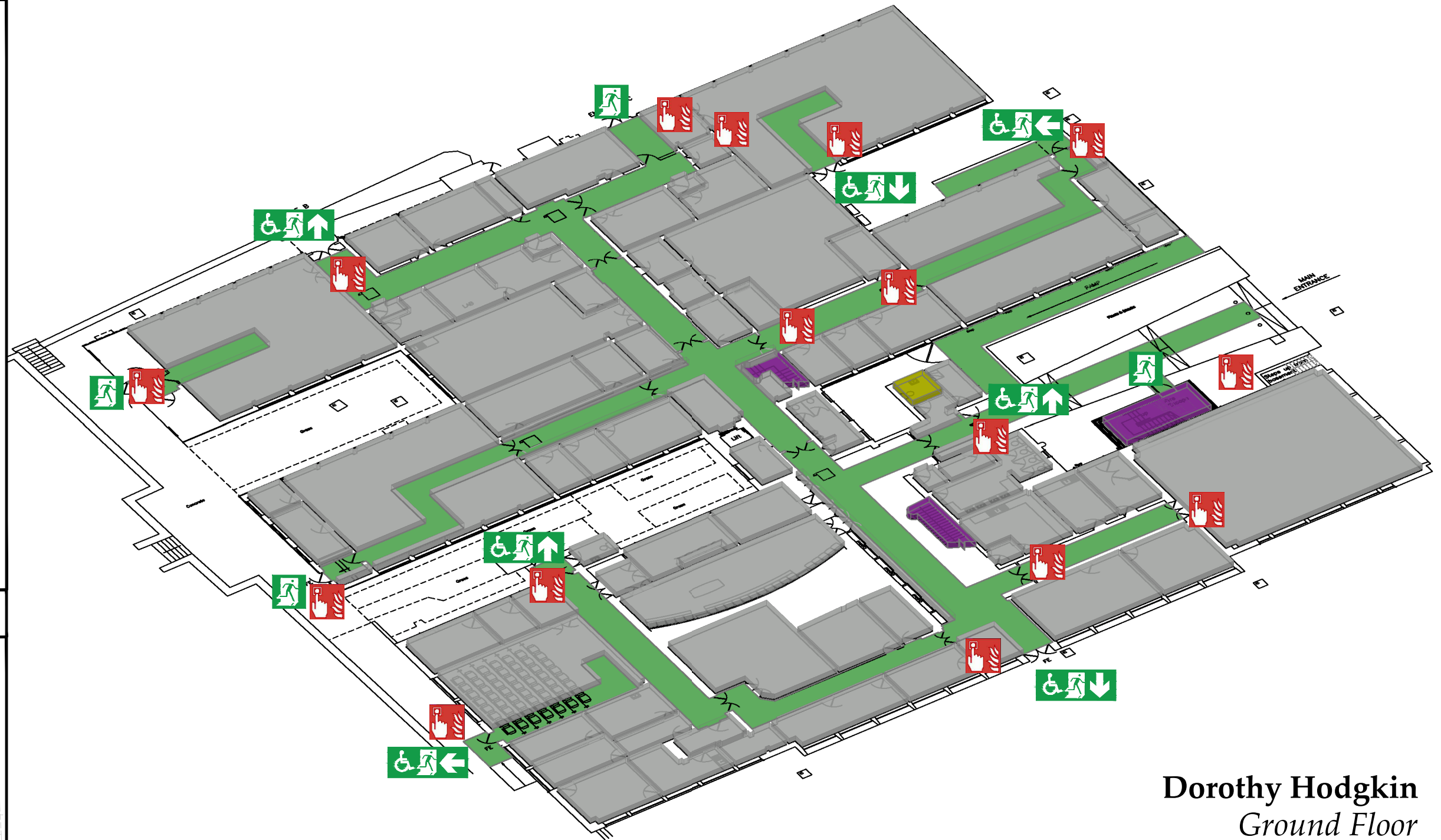
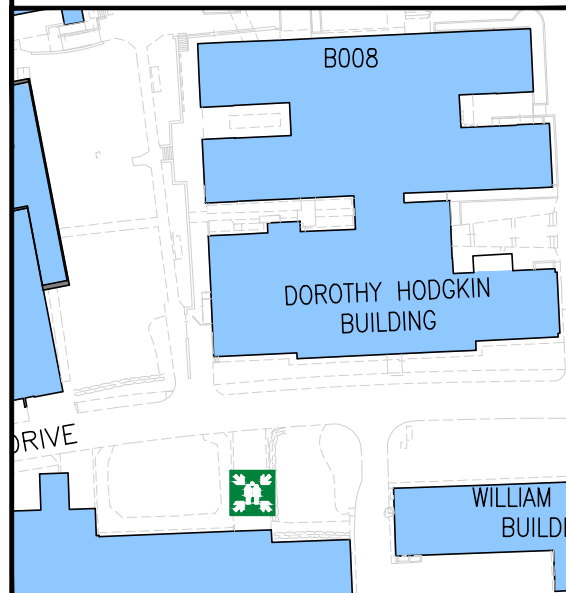


Report to the designated assembly point  
Front of Huxley Building



Contact Campus Safety Team  
01782 733999 to confirm a fire alarm activation

Assembly Point is allocated to the buildings showing in BLUE below



Fire Alarm Call Point



Fire Exit



Assembly Point



Wheelchair Accessible Fire Exit



Fire Escape Route



Fire Escape Stair



Accessible WC

Dorothy Hodgkin  
Ground Floor

