





Fire Escape Plan

**FIRE ACTION**
If you discover or suspect a fire


**Sound the alarm by operating the fire alarm call point**


**Do not attempt to fight the fire unless you are trained to do so**

**Immediately evacuate the area and close all doors to the space.**
On activation of the fire alarm, you must leave the building immediately by the nearest safe available fire exit



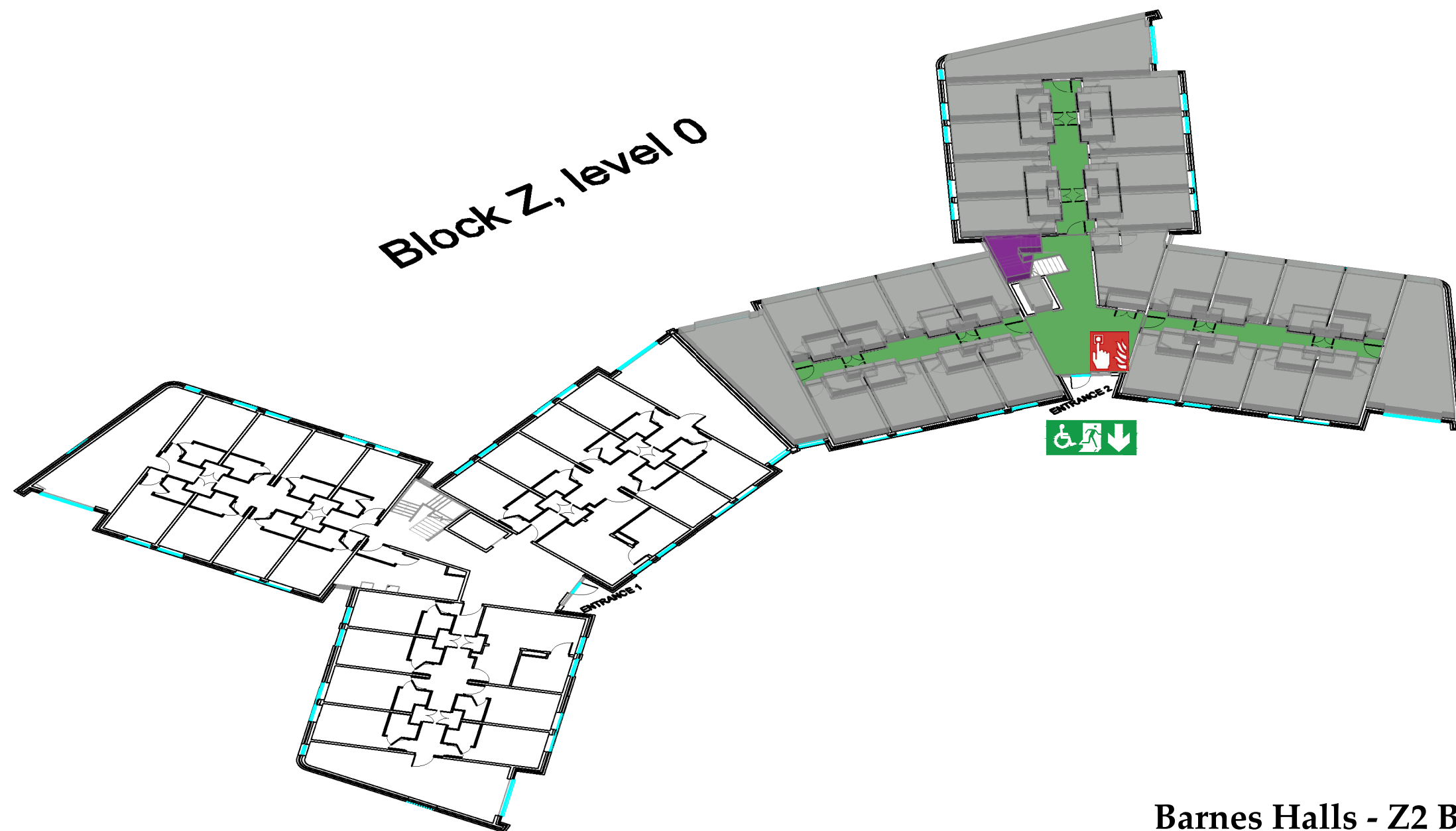
- Do not take risks
- Do not stop to collect personal belongings
- Do not re-enter the building for any reason unless authorised to do so

**Report to the designated assembly point**
Outside Front Entrance

**Contact Campus Safety Team 01782 733999 to confirm a fire alarm activation**

Assembly Point is allocated to the buildings showing in BLUE below





Fire Alarm
Call Point



Fire Exit



Assembly Point



Wheelchair Accessible
Fire Exit



Fire Escape Route



Fire Escape Stair



Accessible WC

Barnes Halls - Z2 Block
Level 0