





Fire Escape Plan


**FIRE ACTION**


If you discover or suspect a fire

**Sound the alarm by operating the fire alarm call point**


**Do not attempt to fight the fire unless you are trained to do so**


**Immediately evacuate the area and close all doors to the space.**

**On activation of the fire alarm, you must leave the building immediately by the nearest safe available fire exit**

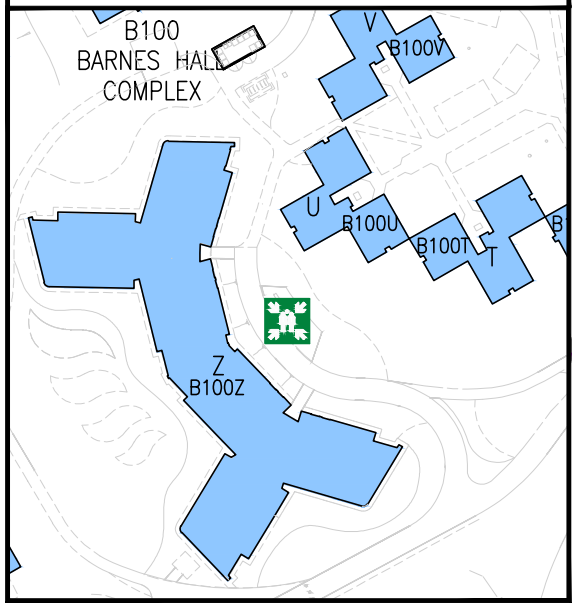


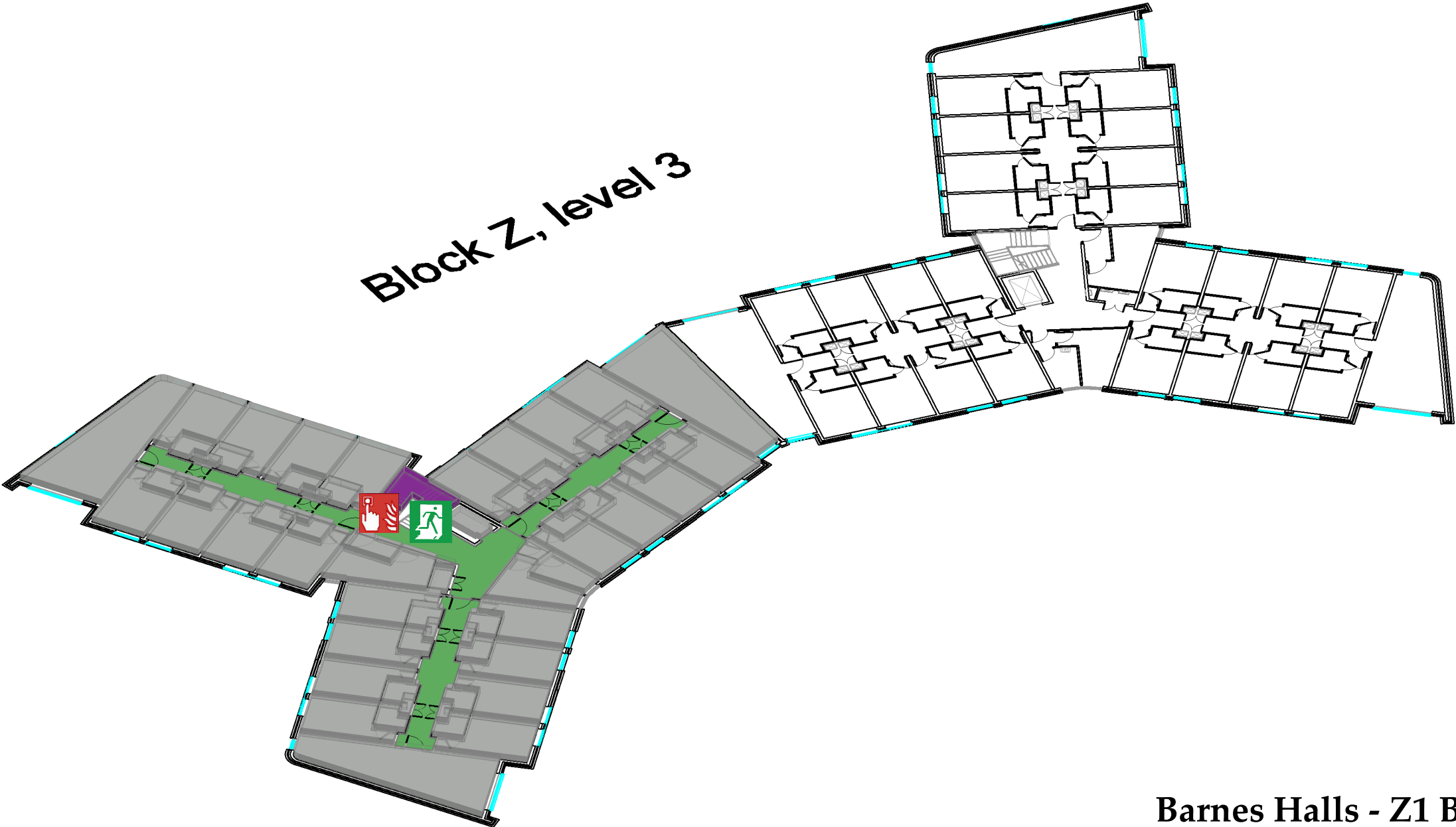
- Do not take risks
- Do not stop to collect personal belongings
- Do not re-enter the building for any reason unless authorised to do so

**Report to the designated assembly point**
Outside Front Entrance

**Contact Campus Safety Team 01782 733999 to confirm a fire alarm activation**

Assembly Point is allocated to the buildings showing in BLUE below





Barnes Halls - Z1 Block
Level 3



Fire Alarm
Call Point



Assembly Point



Fire Exit



Wheelchair Accessible
Fire Exit



Fire Escape Route



Fire Escape Stair



Accessible WC