





# Fire Escape Plan

**FIRE ACTION**  
If you discover or suspect a fire


**Sound the alarm by operating the fire alarm call point**


**Do not attempt to fight the fire unless you are trained to do so**

**Immediately evacuate the area and close all doors to the space.**  
**On activation of the fire alarm, you must leave the building immediately by the nearest safe available fire exit**

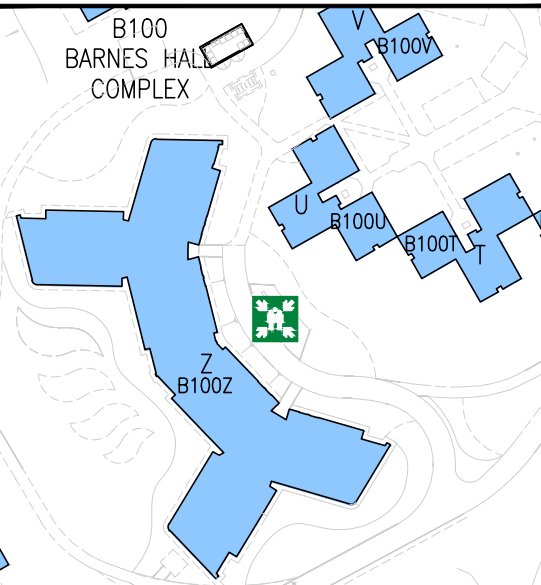


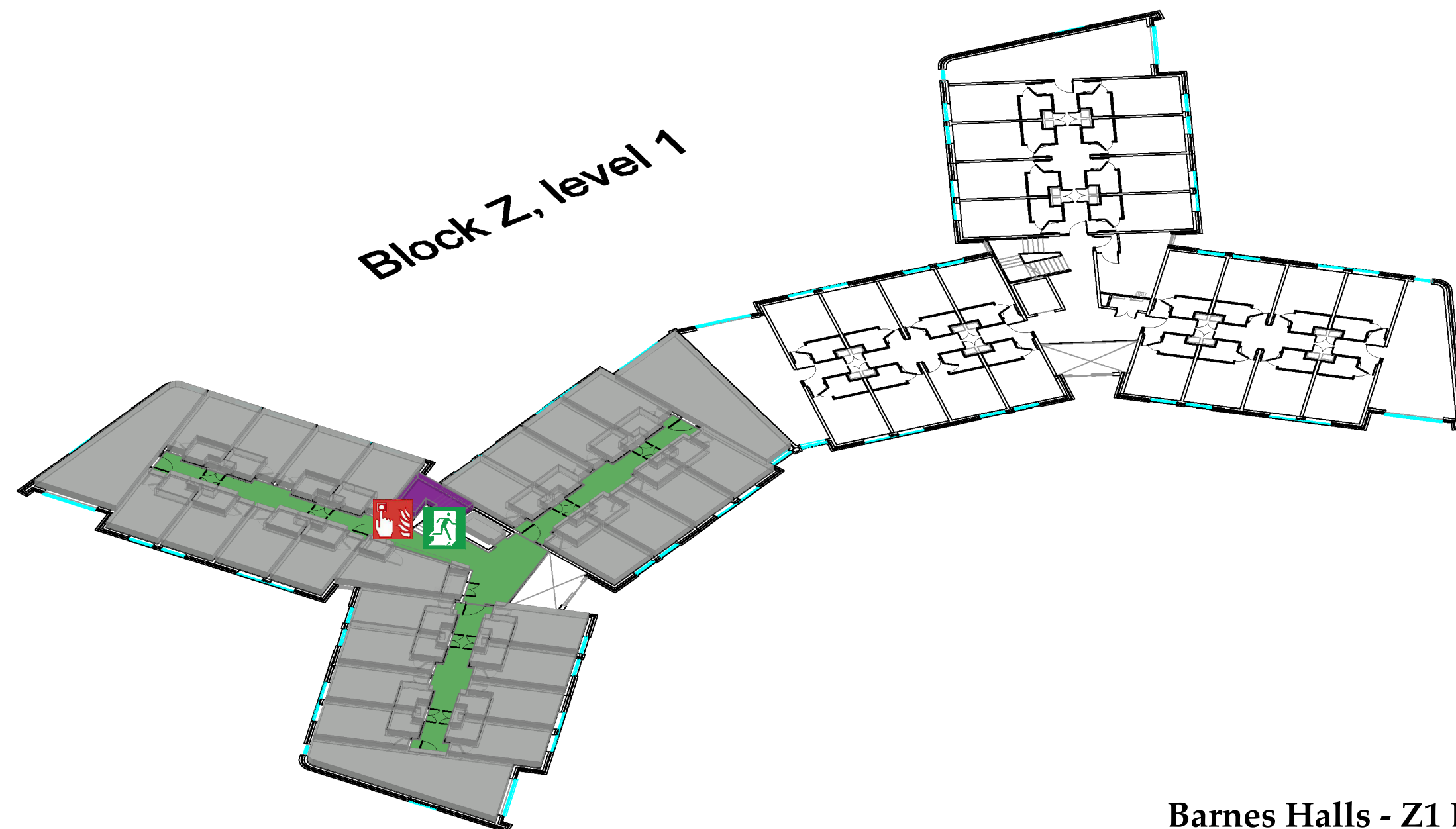
- Do not take risks
- Do not stop to collect personal belongings
- Do not re-enter the building for any reason unless authorised to do so

**Report to the designated assembly point**  
**Outside Front Entrance**

**Contact Campus Safety Team 01782 733999 to confirm a fire alarm activation**

Assembly Point is allocated to the buildings showing in BLUE below





Barnes Halls - Z1 Block  
Level 1



Fire Alarm  
Call Point



Assembly Point



Fire Exit



Wheelchair Accessible  
Fire Exit



Fire Escape Route



Fire Escape Stair



Accessible WC