

Welcome to the Keele Clinical Trials Unit Newsletter!



Who we are...

Keele Clinical Trials Unit (CTU), based in the School of Medicine at Keele University, is a specialist unit that designs, conducts, analyses and publishes high quality clinical trials and other well-designed studies.

Contents

- ❑ **CTU Highlights & Strategic News**
- ❑ **Spotlight on Staff**
- ❑ **Study Updates**
- ❑ **Global Engagement**
- ❑ **Community Involvement & Engagement**

This newsletter shares updates from across our work, including study progress, strategic developments, and community partnerships. Whether you're a researcher, healthcare professional, funder, or patient, we hope you find this issue informative and inspiring.



Working with us:

If you're looking to collaborate with us, please contact: ctu.operations@keele.ac.uk



@keele_ctu



@KeeleCTU



@Keele_CTU



Keele Clinical
Trials Unit



CTU Highlights & Strategic News

National Research Leadership

Keele CTU Director Dr Ivonne Solis-Trapala is helping shape national research priorities as a member of two key NIHR panels:

- HTA Commissioning Funding Committee – supporting funding decisions for high-impact trials.
- Decarbonising the Health and Care System Programme – guiding research to reduce healthcare's environmental footprint.

These appointments reflect Keele's leadership in applied health research and research strategy.

Call for Papers: Decentralised Clinical Trials & Digital Health

Dr Ivonne Solis-Trapala is co-editing a BMC article collection focused on decentralised clinical trials and the use of digital health technologies.

The collection explores innovative methods to improve trial access, engagement, and data collection using digital tools. Researchers are encouraged to contribute to this evolving field.

Contribute here:

biomedcentral.com/collections/DCTR

Knowledge Mobilisation in Trials

A new internal Community of Practice (CoP) has launched at Keele University to explore knowledge mobilisation and implementation science in clinical trials.

Led by Bruno Mazuquin, the group promotes shared learning in this emerging area. Contact: b.mazuquin@keele.ac.uk

Chair of the UK Trial Managers' Network (UKTMN)

We're proud to announce that Sarah A Lawton, CTU Head of Operations, has been appointed Chair of UKTMN.



This prestigious role strengthens Keele's national leadership in trial delivery, workforce development, and best practices in research operations. Congratulations, Sarah!

Contributing to UKCRC CTU Network Strategy

Karl Rogers has been appointed to the UKCRC Data Management and Information Systems Operations Group (DISOG).

Elaine Nicholls has been appointed to the UKCRC Statistics Group.



@keele_ctu



@KeeleCTU



@Keele_CTU



Keele Clinical
Trials Unit

Spotlight on Staff

Welcoming some new CTU Team members...

Bethany Edge

Project Administrator

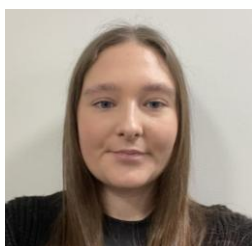


Bethany supports three clinical trials with dedication and efficiency. She enjoys learning about the variety of studies across the CTU – when she's not walking her dog or tackling DIY projects!

Abbie Sutton

Project Support

Administrator



Abbie supports multiple studies and leads our social media. A talented baker and Taylor Swift fan, she keeps operations and communications running smoothly.

Study Updates

Treatments of Exercise AND Orthotics for plantar heel pain – TREADON

The TREADON trial reaches over **480** participants!

Our multi-arm trial investigating treatments for plantar heel pain continues to recruit steadily. An interim analysis is underway. If you are interested in referring patients or learning more? Visit:

www.keele.ac.uk/treadon

UK Trial Managers' Network (UKTMN) Annual Conference



Congratulations to Steff Garvin and Andrea Cherrington, who represented Keele CTU at the UKTMN Conference in Newcastle-upon-Tyne.

Their presentations focused on community engagement and improving trial document processes.

See our socials for photos!

Resilience Workshop

Several CTU colleagues recently took part in a staff resilience workshop, helping to support wellbeing and build a positive, productive workplace culture.



@keele_ctu



@KeeleCTU



@Keele_CTU



Keele Clinical
Trials Unit

Global Engagement

Colleagues from the Faculty of Medicine & Health Sciences at Keele University recently travelled to New Zealand to engage in a collaborative initiative with peers at Auckland University of Technology. During their time in Auckland, the team shared best practices on research operations.



This international partnership reflects our continued commitment to advancing health research through global collaboration and knowledge exchange.

Community Involvement & Engagement

Keele CTU out, about and on the bus...

In the past six months, we've connected with local communities at local football matches, social clubs, at health awareness days, and on the research bus, to raise the profile of health research in the region. If you'd like to get involved or learn more, email us ctu.inspire@keele.ac.uk or check out our social media channels!

iNSPIRE Community Lounge

A welcoming space just for you. The iNSPIRE Community Lounge is a place to connect with others, share your experiences and be part of a supportive research community.

Open to all patients and public contributors, the iNSPIRE Community Lounge takes place on the **last Wednesday** of every month at **10am** - at **Keele-In-Town**, Newcastle town centre



Come for a chat and a brew.
Your voice matters and your story inspires.



@keele_ctu



@KeeleCTU



@Keele_CTU



Keele Clinical
Trials Unit