



**European Union**  
European Regional  
Development Fund



**Business Bridge** provides specialist business support for SMEs looking to grow their business in the Healthcare and Medical Supply Chain.

### What Is Business Bridge?

Business Bridge offers eligible companies funding to work with specialist advisors to access Healthcare and Medical markets, collaborative working with academic experts and access to specialist facilities.

### Who Is It For?

Business Bridge support is available to small or medium-sized businesses based in Stoke-on-Trent and Staffordshire that wish to develop innovative products in the Healthcare and Medical Supply Chain.

### How To Access?

Apply via a simple application process for a prompt decision from the Business Bridge team.

**Email:** Kylie Salmon at [k.salmon@keele.ac.uk](mailto:k.salmon@keele.ac.uk)



100% Grant Funding



Academic Experts



Facilities & Equipment



Sector Specialists



Specialist  
Business Support



Access to NHS



Market Access Support



Research Links



Low Risk Product  
Development



Medical  
Regulatory Advice



Digital Health  
Technologies

**#KeeleHealthNet**  
**#KeeleBusinessBridge**

The Business Bridge Programme (Ref: 32R18P02530, Medical Research and Development Centre Phase Two) is part-funded through the European Regional Development Fund (ERDF) as part of the England 2014 to 2020 European Structural and Investment Funds (ESIF) Growth Programme

**Healthcare Business Network** is a regional forum for companies in all sectors looking to grow their business and make new contacts in the Healthcare and Medical Supply Chain.

### What Is It?

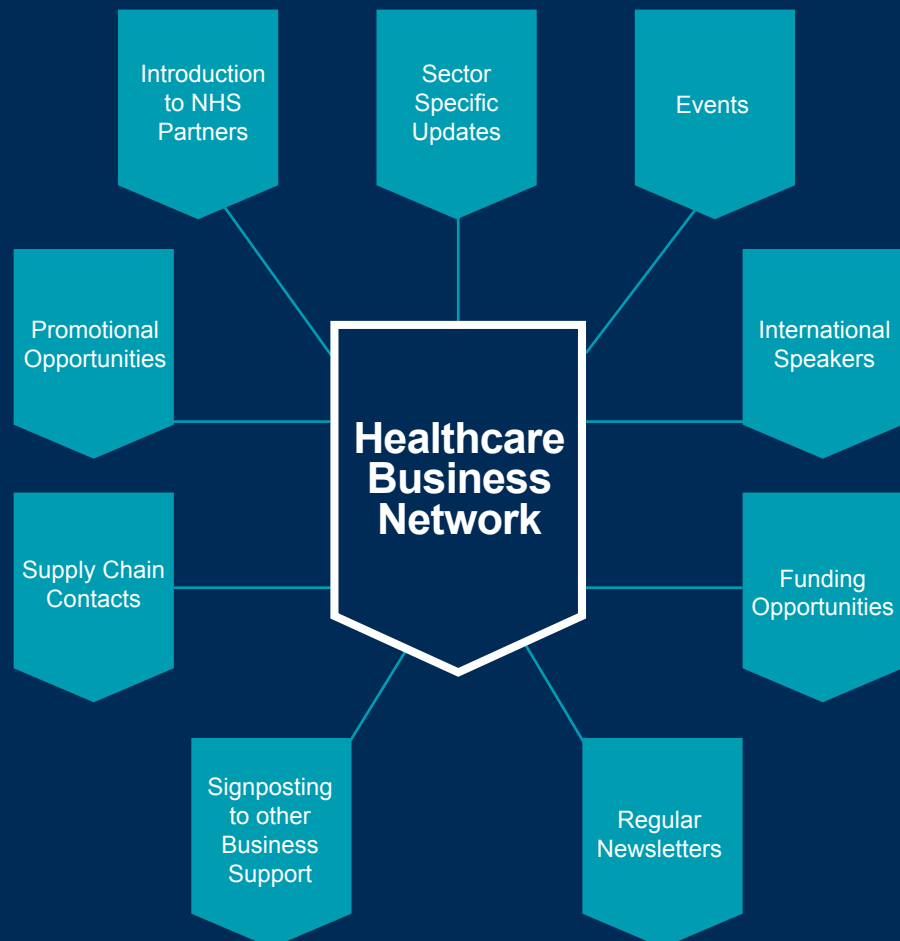
The Network builds on the success of Business Bridge, a programme which supports businesses to accelerate the development of new products and to identify new opportunities in Healthcare markets.

### Who Is It For?

If your business is moving into, or growing within the Health sector, attending this Network will help you to connect with like-minded businesses, supply chain partners and the NHS.

### Discussed Topics:

- ▶ Digital Health
- ▶ Augmented & Virtual Reality
- ▶ Diagnostics
- ▶ Medical Devices
- ▶ Regulatory Compliance



### Contact Us:

k.salmon@keele.ac.uk  
01782 734467