

## Arranging a Visit

The Raven Mason collection is housed within Keele Hall on the main Keele University campus. Admission is by appointment only.

Please contact:

Marketing & Communications

Tel: 01782 733433

Email: [m.ashdown@kfm.keele.ac.uk](mailto:m.ashdown@kfm.keele.ac.uk)

The Raven Trust, Marketing Office, Darwin Building,  
Keele University, Staffordshire ST5 5BG

[www.keele.ac.uk/ravenmason/](http://www.keele.ac.uk/ravenmason/)

## How to find us...

**From the North:** Leave the M6 Motorway at Junction 16, signed A500/Alton Towers. At the motorway roundabout turn right onto the A500 for Crewe and Nantwich. The University is signed from here. At the next roundabout, go straight on A500 (A531) and at the next one turn left onto the A531 (A525) for Keele. After approximately 7 miles, turn right at the roundabout onto campus. From the motorway junction to Keele the journey time is about 20-25 minutes.

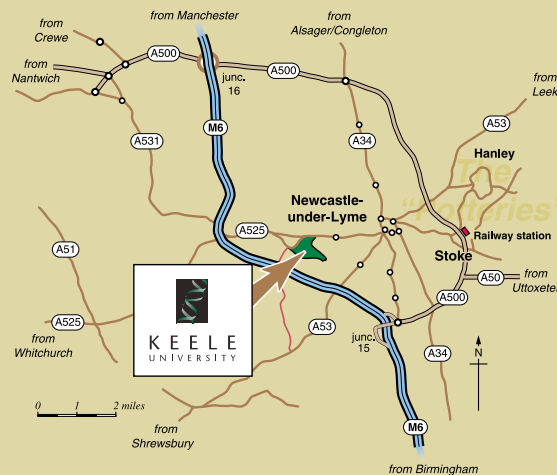
**From the South:** Leave the M6 at Junction 15 and follow the signs for the A519 into Newcastle-under-Lyme. The University is signed from the first roundabout. Two miles out of Newcastle, turn left at the roundabout onto campus. From the motorway junction to Keele the journey time is approximately 15 minutes.

**From the East:** If you are travelling on the A53 follow signs to Newcastle-under-Lyme. If you are using the A50, join the A500 and follow signs to Newcastle. If travelling from the M1, use the new Junction 23A onto the Derby bypass and follow signs for the A50.

**From the West:** Follow signs for the A525. Approaching from the West from Shrewsbury: head for Newcastle-under-Lyme on the A53. Just before entering the town you will pass over the M6 motorway. After about half a mile turn left at the next roundabout. Follow this road to its end, then turn left. At the next roundabout turn left. Keele University entrance is on the left at the top of the hill.

**Arrival by Train:** (Tel. 08457 484950 for timetable details): Rail access is by either Stoke-on-Trent or Crewe stations from where regular bus or taxi services provide transport to the University.

Registered Charity No. 1018133



## Mason's Ironstone China and Porcelain





Miles Mason Teawares,  
Bone China c.1810



Teapot, Hybrid hard paste porcelain 1805

## The Raven Mason Collection

**One of the finest displays of Mason's Ironstone and Porcelain.**

This is a fascinating collection of the distinctive ceramics produced by the Mason's company in the Staffordshire Potteries.

For over 200 years Mason's Ironstone has been one of the most important ceramic names in the British ceramic industry. The original company was founded by Miles Mason in 1796 and was further developed by his sons, George Miles and Charles James Mason, who took over the management in 1813.

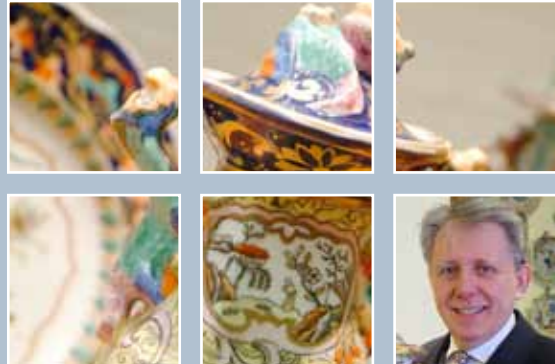
Lovingly assembled by three members of the Raven family, two brothers John and Ronald and their sister Dame Kathleen, the Raven Mason collection was presented to Keele University in 1993 and is held in Trust.

The University displays the collection in the magnificent Victorian mansion, Keele Hall, created by Anthony Salvin for Ralph Sneyd in the late 1860s and may be viewed by prior appointment.

The earliest pieces are of fine porcelain and bone china created by Miles Mason. Over 800 different patterns were originally produced by the company, chiefly in tea, coffee and dessert services.

In 1813 the firm took out its famous patent for the manufacture of Ironstone China and the collection contains some of the rarest examples of ornamental pieces and tableware. Among them are pieces richly hand painted with oriental designs known as Japan or Imari patterns. The distinctive development of this style of decoration during the 19th century is quite breathtaking.

[www.keele.ac.uk/ravenmason/](http://www.keele.ac.uk/ravenmason/)



Harry Frost MA, Raven Mason Curator

## Lectures and Tours

We are pleased to arrange tours for groups or individuals. A fascinating illustrated talk entitled 'The Masons and their Wares' is available for groups by prior arrangement. There will be opportunity for questions and to view the collection in more depth. The 'Connoisseur Lecture and Tour' lasts two hours and you can order refreshments at the time of booking. Please ask for fee details or visit the Raven Mason website.

## Visiting Lectures

The Curator will be pleased to visit your organisation to give an illustrated talk on The Raven Mason Collection of Mason's Ironstone and China and other English ceramics. There is a fee for these lectures. Please contact the Marketing Administrator for details.

## Fees

Fees apply to both the Connoisseur Lecture and Tour and other lectures given by the Curator. For further information please refer to 'Arranging a Visit' on the reverse page.

[www.keele.ac.uk/ravenmason/](http://www.keele.ac.uk/ravenmason/)



Essence Jar, Ironstone c.1825

## Collection Tour

Tours of the collection can be arranged by prior appointment for groups from a minimum of 10. The collection is a non-profit making registered charity but a small charge is levied to defray security and other running costs and to maintain the collection.

For more information on this tour and charges, please refer to 'Arranging a Visit' on the reverse page.

## Schools and Higher Education

By prior arrangement, groups from schools or students in further and higher education are also admitted to the collection free of charge.

## Refreshments

For groups visiting the Raven Mason Collection, light refreshments may be booked in advance and will be charged accordingly (should you have any special dietary requirements, please make this known when booking).

## Access

The Raven Mason Suite is located in Keele Hall on the first floor. To allow for better disabled access a lift has been installed, which can be found in the area adjacent to the main restaurant.

[www.keele.ac.uk/ravenmason/](http://www.keele.ac.uk/ravenmason/)